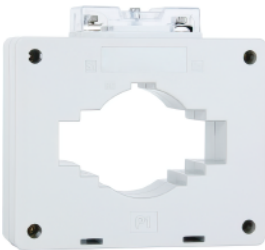


General

VCT series transformer is an indoor type current transformer, suitable for current measurement, electric energy measurement or relay protection in circuits with rated frequency of 50 /60Hz, rated voltage of 0.66kV and below, and isolating measurement and protection device from high voltage.

VCT series are tested according to IEC61869-2.



Selection Guide

Current Transformer with Wound Primary

VCT	5/3.75	0.5	5/5	◆
Model	Burden	Accuracy Class	Ratio	Current Transformer with Wound Primary
VCT	5/3.75	0.5 0.2 0.5S 0.2S	5/5 10/5 15/5 50/5	Current Transformer with Wound Primary

Current Transformer with Through Primary

VCT	30	2.5	0.5	5/5	◆
Model	Specification	Burden	Accuracy Class	Ratio	Bar-type Current Transformer
VCT	30 40 50 60 80 100 120	2.5 5/3.75 10/3.75 15	0.5 0.2 0.5S 0.2S	5/5 10/5 15/5 5000/5	Bar-type Current Transformer

Operating&Installation Condition

Operating Temperature: -5~40°C

Operating Humidity: ≤80%

Altitude: ≤1000m

Installation Location: Indoor, no metal dust and violent shaking place.

There is no serious pollution in the atmosphere of the installation site and no any gas or conductive dust sufficient to corrode the metal and destroy the insulation.

Structural Features

The transformer is mainly composed of coil and plastic shell. It is dry insulation. The transformer can be clamped on the busbar by the fixing screw or fixed by the mounting plate.

Main Technical Parameter

Model	Maximum busbar size can be passed	Wire number	Rated Primary Current	Rated Secondary Current	Number of Turns Through Iron Core	Burden VA			
						0.5 Class	0.2 Class	0.5S Class	0.2S Class
VCT Current Transformer with Wound Primary	—	—	5~50	5	—	5/3.75	5/3.75	5/3.75	5/3.75
VCT30	10× 30	1	50	5	1	2.5	—	2.5	—
			75	5	1	2.5	5/3.75	5/3.75	5/3.75
			100	5	1	5/3.75	5/3.75	5/3.75	5/3.75
VCT30	—	—	20	5	10	5/3.75	5/3.75	5/3.75	5/3.75
			30	5	5	2.5	5/3.75	5/3.75	5/3.75
			40	5	5	5/3.75	5/3.75	5/3.75	5/3.75
	—	—	50	5	3	2.5	5/3.75	5/3.75	5/3.75
			75	5	2	2.5	5/3.75	5/3.75	5/3.75
			100	5	2	5/3.75	5/3.75	5/3.75	5/3.75
	10× 30	1	150	5	1	2.5	5/3.75	5/3.75	5/3.75
			200~500	5	1	5/3.75	5/3.75	5/3.75	5/3.75
VCT40	—	—	20	5	10	5/3.75	—	—	—
			30	5	5	2.5	—	—	—
			40	5	5	5/3.75	—	—	—
	—	—	50	5	3	2.5	—	—	—
			75	5	2	2.5	—	—	—
			100	5	2	5/3.75	—	—	—
	10× 40	1	100	5	1	2.5	—	—	—
			150	5	1	2.5	—	2.5	—
200			5	1	5/3.75	5/3.75	5/3.75	5/3.75	
250~600			5	1	5/3.75	5/3.75	5/3.75	5/3.75	
750~1000			5	1	10/3.75	10/3.75	10/3.75	10/3.75	
VCT50	—	—	75	5	4	5/3.75	—	—	—
			100	5	3	5/3.75	—	—	—
			200	5	2	5/3.75	—	—	—
	10× 50	1	250	5	1	2.5	—	—	—
			300~600	5	1	5/3.75	5/3.75	5/3.75	5/3.75
			750~1600	5	1	10/3.75	10/3.75	10/3.75	10/3.75
VCT60	6× 60	2	300~600	5	1	5/3.75	5/3.75	5/3.75	5/3.75
			750、800	5	1	10/3.75	10/3.75	10/3.75	10/3.75
			1000~2000	5	1	15	15	10/3.75	10/3.75
VCT80	6× 80	2	500、600	5	1	5/3.75	5/3.75	5/3.75	5/3.75
			750、800	5	1	10/3.75	10/3.75	10/3.75	10/3.75
			1000~2000	5	1	15	15	10/3.75	10/3.75
VCT100	10× 100	2	600	5	1	5/3.75	—	—	—
			750、800	5	1	10/3.75	5/3.75	5/3.75	5/3.75
			1000 ~4000	5	1	15	15	15	15
VCT120	12.5× 120	2	600、750	5	1	5/3.75	—	—	—
			800	5	1	10/3.75	—	—	—
			1000、1200	5	1	10/3.75	10/3.75	—	—
			1500 ~5000	5	1	15	15	15	10/3.75

Installation Dimension

The installation dimension of the through primary current transformer see figure 1-figure 3, wound primary current transformer see figure 4-figure 6

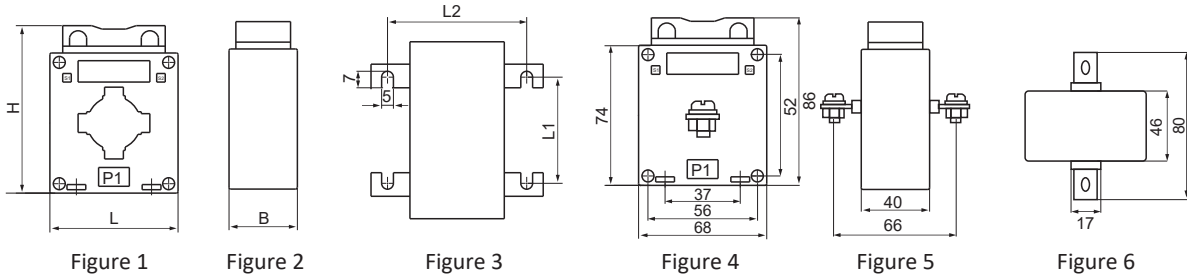
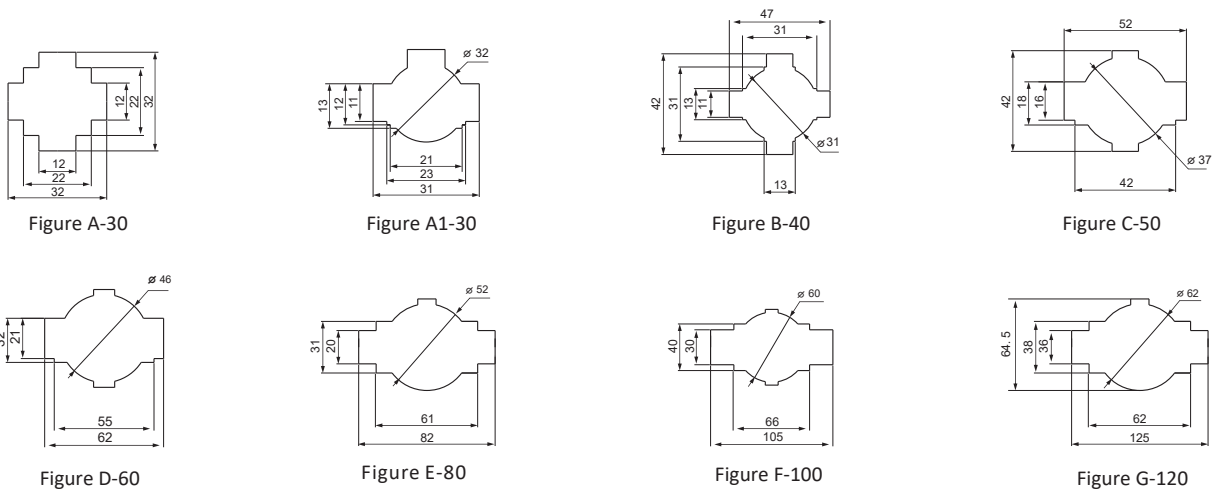


Table 1

Model	Rated Ampere-turn	Appearance Dimension (mm)			Installation Dimension (mm)		Corresponding Picture (mm)	Corresponding Accuracy Level
		H	L	B	L1	L2		
VCT30	75~100	116	90	50	40	59	Figure A-30	0.2,0.5S,0.2S
VCT30	50	98	75	40	44	59	Figure A-30	1.0,0.5,0.5S
VCT30	75~100	98	75	40	44	59	Figure A-30	0.5
VCT30	150~250	98	75	40	44	59	Figure A-30	0.2,0.5S,0.2S
VCT30	150~600	80	60	36	32	59	Figure A1-30	0.5
VCT40	100~1000	98	75	40	44	59	Figure B-40	0.5,0.2,0.5S,0.2S
VCT50	250~1500	98	82	40	50	59	Figure C-50	0.5,0.2,0.5S,0.2S
VCT60	300~2000	126	102	40	50	59	Figure D-60	0.5,0.2,0.5S,0.2S
VCT80	500~3000	118	125	40	50	59	Figure E-80	0.5,0.2,0.5S,0.2S
VCT100	600~4000	136.5	170	40	80.3	59	Figure F-100	0.5,0.2,0.5S,0.2S
VCT20	600~5000	153	190	46	100	59	Figure G-120	0.5,0.2,0.5S,0.2S

VCT Series Overall Dimension (Figure A-G)



Ordering Instruction

The default current transformer is with wound primary for current below 100A, state if you need bar-type current transformer when place the order.

Please specify the product model and specification, burden, accuracy, ratio, quantity.