


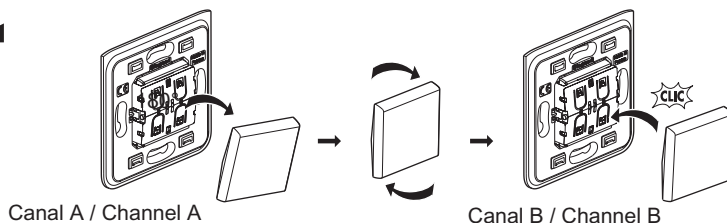
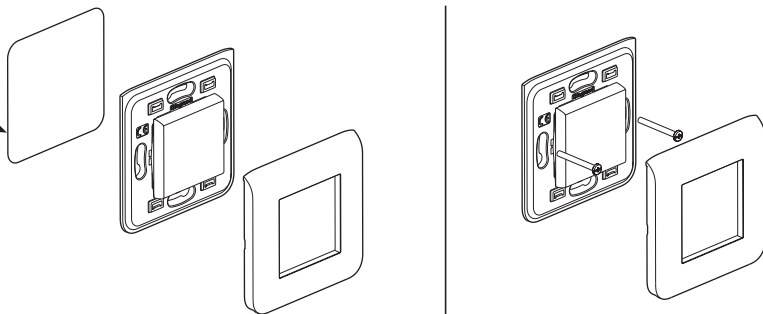
	868,3 MHz
	30 m intérieur - 300 m extérieur 30 m indoors - 300 m outdoors
	- 25° C / + 65° C
	95 % maximum
Canal / Channel	1

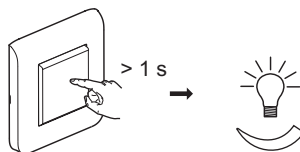
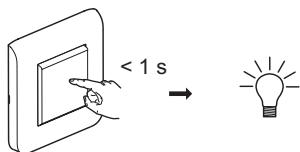
Installation

adhésif
adhesive

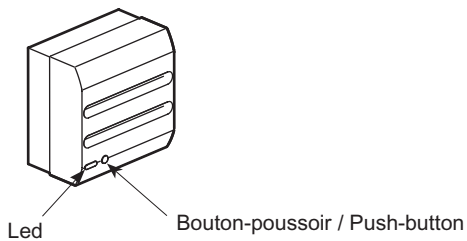


Ne pas fixer sur un support en métal / Do not mount on a metal support

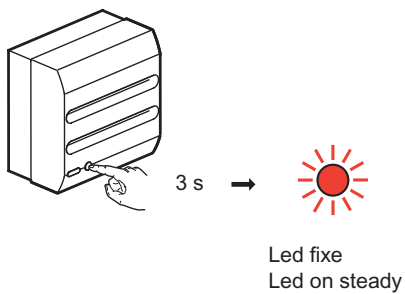
Fonctionnement / Operation



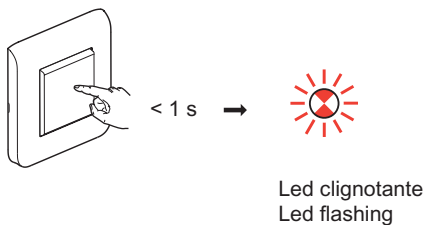
Programmation / Programming



1 Récepteur / Receiver Enocean



2 Emetteur / Emitter Enocean



3 Actionneur / Actuator

