

• Dimmer 500W Rotary + 2 Way Switch



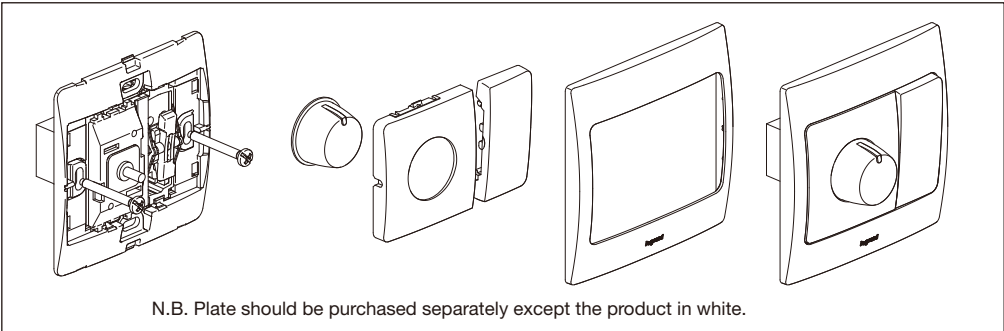
• Utilization

N.B: These values to be reduced by 20% per temperature band of 10°C above 25°C.

 25°C 230V 50Hz/60Hz	① 	② 	③ 	④ 	⑤ 	⑥
Max	500W	200VA	— NO —	— NO —	— NO —	— NO —
Min	25W	60VA				

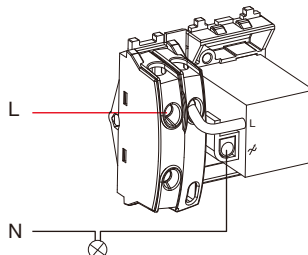
1. Incandescent lamps
2. Halogen lamps with built-in ferromagnetic transformer + compensator (forbidden without compensator)
3. Halogen lamps 220V (forbidden)
4. Fluorescent lamps (forbidden)
5. Transformers (forbidden)
6. Motors (forbidden)

Important: If the wiring diagrams are not strictly followed, or if the values shown in the table are exceeded (voltage, power, temperature, frequency), or if the power is too low and causes the light to blink, the dimmer would be severely damaged.



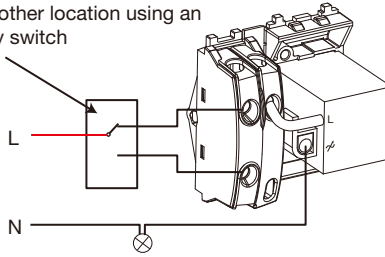
• Wiring

①



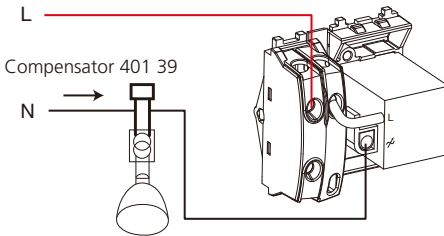
②

Control from another location using an additional 2 way switch



Important: Brightness can only be controlled via the dimmer.

③



For Extra Low Voltage halogen sources with ferromagnetic transformer, use a compensator.

Important:

- Take the transformer loss into account when calculating the total power;
- The transformers should be loaded to more than 60% of its capacity.

Important: If the wiring and installation do not comply with the above instructions, all damages to the product or other devices will be excluded from warranty.

• **Operation**

