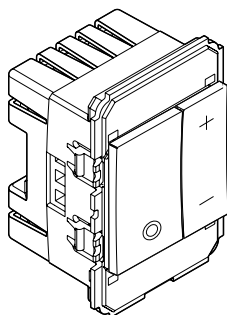
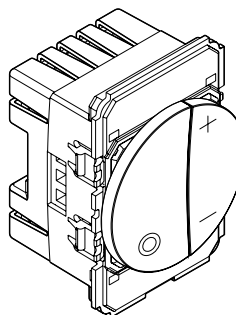


Arteor™
Dimmer switch, 600 W, without neutral

Cat. No(s).: 5722 11 - 5727 11 - 5743 05/55



5722 11 - 5727 11



5743 05/55

1. USE

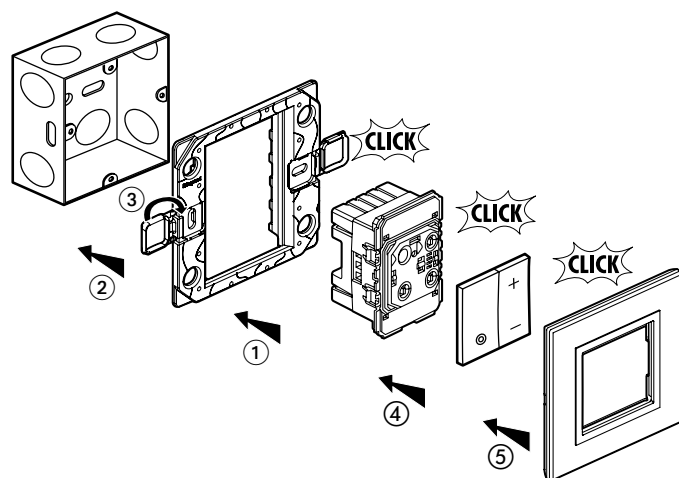
Dimmer switch for controlling lighting devices.

2. RANGE

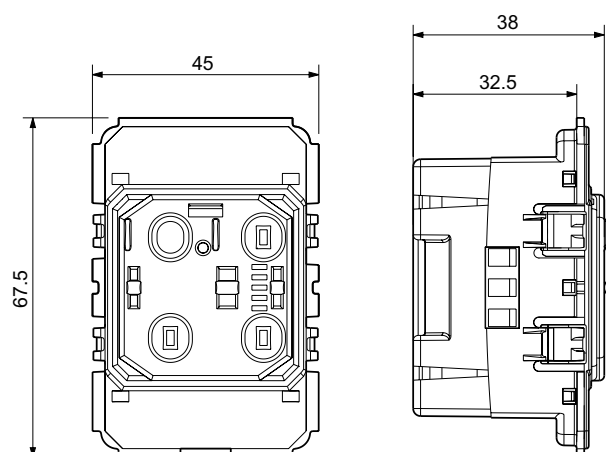
	Designation	Finishes		No. of modules	Connection method	Weight (g)
		White	Magnesium			
	Remote-control dimmer switch square	5722 11	5727 11	2	Cage-type	49
	Remote-control dimmer switch round	5743 05	5743 55	2	Cage-type	48

3. PREPARATION

The mechanisms can be flush-mounted or surface-mounted.



4. OVERALL DIMENSIONS

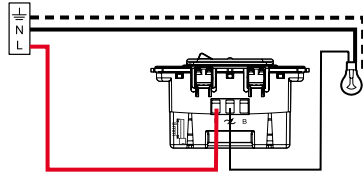


5. CONNECTION

Number of terminals: 3
 Terminal type: Cage-type connector
 Terminal capacities: 2 x 2.5 mm²
 Tool: 3.5 mm flat-blade screwdriver
 Stripping: 8 mm

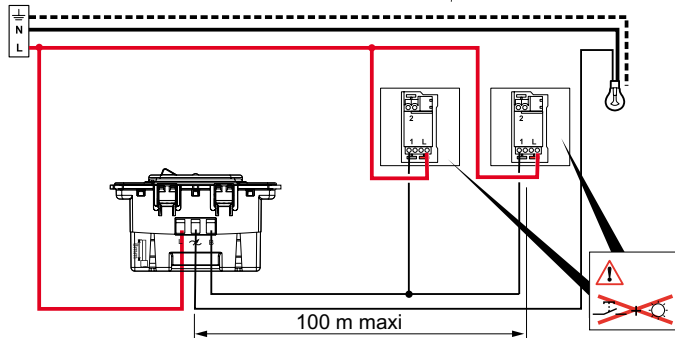
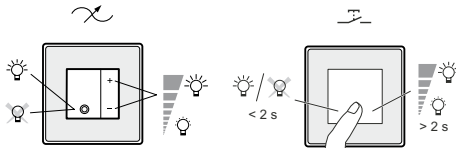
Wiring:

5.1 Connection of one lighting point



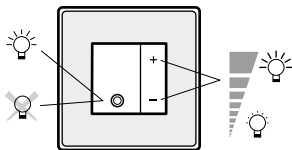
5.2 Connection of several lighting point

By combining NO pushbutton (without locator): two-way switch function with light dimming from all light control points.



6. OPERATION

Dimmer switch with level memory for switching on (by pressing any button) with the same light intensity used before switching off or mains cut-off.



7. TECHNICAL CHARACTERISTICS

7.1 Mechanical characteristics

Impact tests: IK 04
 Protection by solid bodies/liquids: IP 40 (mounted)
 IP 20 (alone)

7.2 Material characteristics

Base + cover: polycarbonate
 Rockers: polycarbonate

7.3 Electrical characteristics

Voltage: 100/240 VAC
 Frequency: 50/60 Hz
 Self-extinguishing: 650° C / 30 s.
 Power:

240 Vac	Max.	600 W	600 W	600 VA
	Min.	40 W	40 W	40 VA
100 Vac	Max.	300 W	300 W	300 VA
	Min.	20 W	20 W	20 VA

(*)Use only transformers which are intended for use with an electronic switch (with protection).

7.4 Climatic characteristics

Storage temperatures: - 10° C to + 70° C
 Operating temperatures: - 5° C to + 35° C

8. CLEANING

Surface cleaning with a cloth.

Do not use: acetone, tar remover, trichloroethylene.

Resistance to following cleaning agents: Hexane (EN 60669-1), Methylated spirits, Soapy water, Diluted ammonia, Diluted pure bleach 10%, Glass cleaning substance, Pre-impregnated wipes.

Caution: A preliminary test should be carried out if other specific cleaning products are to be used.