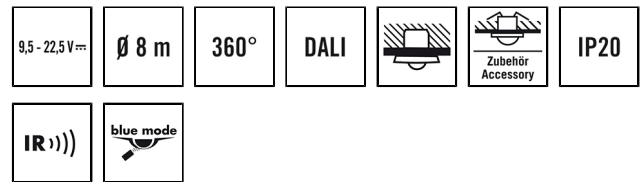


PD-FLAT 360i/8 SQUARE WHITE DALI SET

Item number **GTIN**
 EP10428715 4015120428715



Product description

- DALI design presence detector with excellent detection capabilities, at least 8 m in diameter
- Low profile design with plastic design covers: square, white - variably interchangeable (alternatively: round, glass, black)
- Set: DALI bus power supply 200 mA included in delivery

Technical data

GENERAL	
Device category	Ceiling-mounted presence detector
Special product features	Simple programming using remote control with "blue mode" technology
User interface	IR remote control, DALI-Bus
Remote controllable	✓
Conformity	CE, RoHS, WEEE
Warranty	5 years
ATTACHMENT	
Installation type	Recessed mounting
Installation position	Ceiling
Installation dimension	Installation depth: 24 mm, Ø 60 mm
Type of connection	Push terminal
Connectable wire cross section	1,50 - 2,50 mm ²
HOUSING	
Dimensions	Length 77 mm x Width 77 mm x Height/Depth 30 mm
Weight	80 g
Material	UV-stabilised polycarbonate
Protection type	IP20
Permissible ambient temperature	0 °C...+50 °C
Relative humidity	5 - 93 %, non-condensing
Colour	white, similar to RAL 9010
ELECTRICAL VERSION	
Protection class	III
Nominal voltage	230 V / 50 - 60 Hz
Power consumption	0,3 W

Power consumption	12 mA
-------------------	-------

SENSORS	
Detection angle	360°
Detection range diagonally	Ø 8 m
Detection range head-on	Ø 6 m
Detection range presence	Ø 4 m
Field of detection	up to 50 m ²
Range adjustment	mechanically with internal lens cover
Recommended installation height	2,5 m
Max. mounting height	5 m
Light measurement	mixed light

CONTROL	
Number of light channels	1
Number of HLK-channels	2
Push button input lighting	1
Push button input HVAC	–
Slave input	✓
Mode	Semi-automatic, Fully automatic
Konstantlichtregelung	✓
Channel 1	Lighting
Interface	Switching/Dimming
Contact	Bus system
Push button input channel 1	✓
Switch-off delay channel 1	60 s...240 min
Orientation light	10 - 50 % luminous efficiency
Switch-off delay time, orientation light	disabled/approx. 1 minute – 240 minutes
Orientation light	10 - 50 % luminous efficiency

PD-FLAT 360i/8 SQUARE WHITE DALI SET

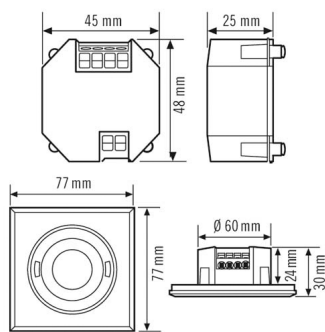
Item number	GTIN
EP10428715	4015120428715

Switch-off delay time, orientation light	disabled/approx. 1 minute – 240 minutes	Master/slave function	✓
Function	Switching	Manual override	yes, via IR
Bus voltage	9.5–22.5 V DC	DALI output 1	DALI bus / Broadcast

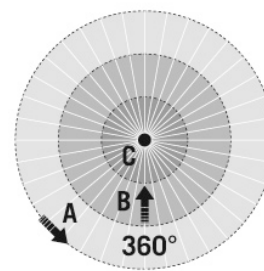
Accessories

Product designation	Item number	GTIN
ESY-Pen	EP10425356	4015120425356
REMOTE CONTROL PDi DALI	EP10425899	4015120425899
FLAT COVER ROUND WH	EP00007231	4015120007231
FLAT COVER GLASS ROUND WH	EP00007255	4015120007255
FLAT COVER GLASS SQUARE WH	EP00007262	4015120007262
FLAT MOUNTING SET IP20 FM	EP10426889	4015120426889
ACTUATOR FULL AUTO C3 DALI	EP10427473	4015120427473
ACTUATOR SEMI AUTO C4 DALI	EP10427480	4015120427480
BASKET GUARD ROUND SMALL	EM10425615	4015120425615
BASKET GUARD ROUND LARGE	EM10425608	4015120425608

Scale drawing



Field of detections



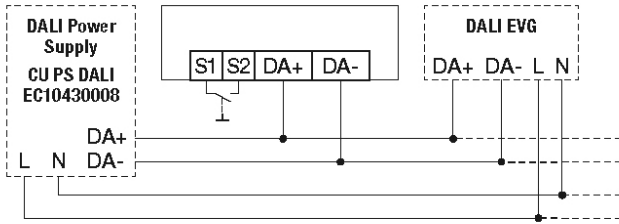
Detection range

Diagonally (A)	∅ 8 m
Frontal (B)	∅ 6 m
Presence area (C)	∅ 4 m

PD-FLAT 360i/8 SQUARE WHITE DALI SET

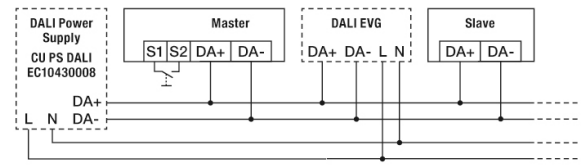
Item number GTIN
 EP10428715 4015120428715

Circuit diagram



Standard operation

Circuit diagram



Master/Slave mode