

## PD-FLAT 360i/8 LARGE ROUND WHITE DALI SET

**Item number**      **GTIN**  
 EP10428661      4015120428661



### Product description

- DALI design presence detector with excellent detection capabilities, at least 8 m in diameter
- Low profile design with plastic design covers (Ø 104 mm): round, white - variably interchangeable (alternative: square, glass, black)
- Set: DALI bus power supply 200 mA included in delivery

### Technical data

GENERAL	
Device category	Ceiling-mounted presence detector
Special product features	Simple programming using remote control with "blue mode" technology
User interface	IR remote control, DALI-Bus
Remote controllable	✓
Conformity	CE, RoHS, WEEE
Warranty	5 years
ATTACHMENT	
Installation type	Recessed mounting
Installation position	Ceiling
Installation dimension	Installation depth: 24 mm, Ø 60 mm
Type of connection	Push terminal
Connectable wire cross section	1,50 - 2,50 mm <sup>2</sup>
HOUSING	
Dimensions	Height/Depth 30 mm, Ø 104 mm
Weight	83 g
Material	UV-stabilised polycarbonate
Protection type	IP20
Permissible ambient temperature	0 °C...+50 °C
Relative humidity	5 - 93 %, non-condensing
Colour	white, similar to RAL 9010
ELECTRICAL VERSION	
Protection class	III
Nominal voltage	230 V / 50 - 60 Hz
Power consumption	0,3 W

Power consumption	12 mA
-------------------	-------

SENSORS	
Detection angle	360°
Detection range diagonally	Ø 8 m
Detection range head-on	Ø 6 m
Detection range presence	Ø 4 m
Field of detection	up to 50 m <sup>2</sup>
Recommended installation height	2,5 m
Max. mounting height	5 m
Light measurement	mixed light

CONTROL	
Number of light channels	1
Number of HLK-channels	2
Push button input lighting	1
Push button input HVAC	-
Slave input	✓
Mode	Semi-automatic, Fully automatic
Konstantlichtregelung	✓
Channel 1	Lighting
Interface	Switching/Dimming
Contact	Bus system
Push button input channel 1	✓
Switch-off delay channel 1	60 s...240 min
Orientation light	10 - 50 % luminous efficiency
Switch-off delay time, orientation light	disabled/approx. 1 minute – 240 minutes
Orientation light	10 - 50 % luminous efficiency
Switch-off delay time, orientation light	disabled/approx. 1 minute – 240 minutes

## PD-FLAT 360i/8 LARGE ROUND WHITE DALI SET

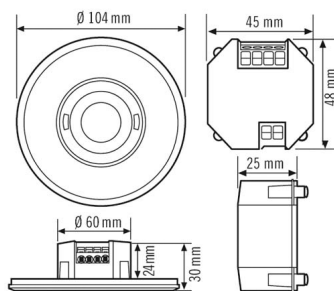
Item number	GTIN
EP10428661	4015120428661

Function	Switching	Manual override	yes, via IR
Bus voltage	9.5–22.5 V DC	DALI output 1	DALI bus / Broadcast
Master/slave function	✓		

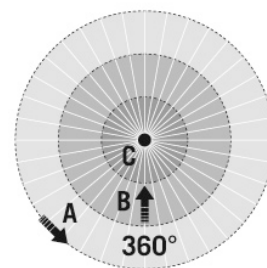
### Accessories

Product designation	Item number	GTIN
ESY-Pen	EP10425356	4015120425356
REMOTE CONTROL MDi/PDi	EM10425509	4015120425509
FLAT COVER ROUND BK	EP00007279	4015120007279
FLAT COVER GLASS ROUND WH	EP00007255	4015120007255
FLAT COVER GLASS ROUND BK	EP00007293	4015120007293
FLAT COVER LARGE ROUND BK	EP10428098	4015120428098
FLAT COVER LARGE ROUND WH	EP10428579	4015120428579
COMPACT MOUNTING BOX IP20 SM WH	EP10425370	4015120425370
FLAT MOUNTING SET IP20 FM	EP10426889	4015120426889
BASKET GUARD ROUND LARGE	EM10425608	4015120425608
BASKET GUARD ROUND SMALL	EM10425615	4015120425615

### Scale drawing



### Field of detections



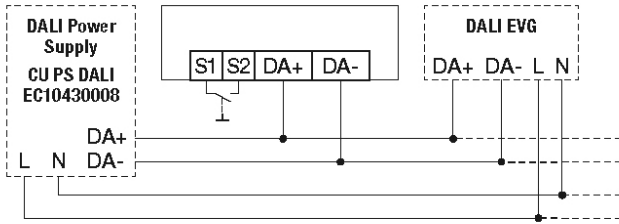
### Detection range

Diagonally (A)	$\varnothing 8\text{ m}$
Frontal (B)	$\varnothing 6\text{ m}$
Presence area (C)	$\varnothing 4\text{ m}$

## PD-FLAT 360i/8 LARGE ROUND WHITE DALI SET

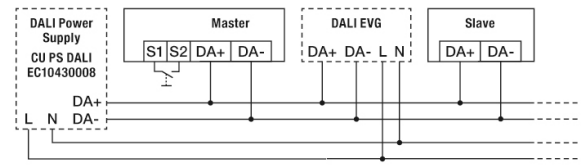
Item number      GTIN  
 EP10428661      4015120428661

Circuit diagram



Standard operation

Circuit diagram



Master/Slave mode