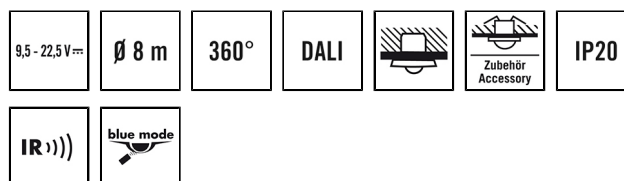


PD-FLAT 360i/8 ROUND BLACK DALI

Item number **GTIN**
 EP10427916 4015120427916



Product description

- DALI design presence detector with excellent sensing capabilities, at least 8 m in diameter.
- Low profile design with plastic design covers: round, black - variably interchangeable (alternatively: square, glass, white)

Technical data

GENERAL

| | |
|------------------------------|---|
| Device category | Ceiling-mounted presence detector |
| Special product features | Simple programming using remote control with "blue mode" technology |
| User interface | IR remote control, DALI-Bus |
| Remote controllable | ✓ |
| Conformity | CE, RoHS, WEEE |
| Product-specific information | Separate DALI power supply required |
| Warranty | 5 years |

ATTACHMENT

| | |
|--------------------------------|------------------------------------|
| Installation type | Recessed mounting |
| Installation position | Ceiling |
| Installation dimension | Installation depth: 24 mm, Ø 60 mm |
| Type of connection | Push terminal |
| Connectable wire cross section | 1,50 - 2,50 mm ² |

HOUSING

| | |
|---------------------------------|-----------------------------|
| Dimensions | Height/Depth 30 mm, Ø 94 mm |
| Weight | 73 g |
| Material | UV-stabilised polycarbonate |
| Protection type | IP20 |
| Permissible ambient temperature | 0 °C...+50 °C |
| Relative humidity | 5 - 93 %, non-condensing |
| Colour | black, similar to RAL 9004 |

ELECTRICAL VERSION

| | |
|------------------|--------------|
| Protection class | III |
| Nominal voltage | 9,5 - 22,5 V |

| | |
|-------------------|-------|
| Power consumption | 0,3 W |
| Power consumption | 12 mA |

SENSORS

| | |
|---------------------------------|---------------------------------------|
| Detection angle | 360° |
| Detection range diagonally | Ø 8 m |
| Detection range head-on | Ø 6 m |
| Detection range presence | Ø 4 m |
| Field of detection | up to 50 m ² |
| Range adjustment | mechanically with internal lens cover |
| Recommended installation height | 2,5 m |
| Max. mounting height | 5 m |
| Light measurement | mixed light |

CONTROL

| | |
|--|---|
| Number of light channels | 1 |
| Number of HLK-channels | 2 |
| Push button input lighting | 1 |
| Push button input HVAC | - |
| Slave input | ✓ |
| Mode | Semi-automatic, Fully automatic |
| Konstantlichtregelung | ✓ |
| Channel 1 | Lighting |
| Interface | Switching/Dimming |
| Contact | Bus system |
| Push button input channel 1 | ✓ |
| Switch-off delay channel 1 | 60 s...240 min |
| Orientation light | 10 - 50 % luminous efficiency |
| Switch-off delay time, orientation light | disabled/approx. 1 minute – 240 minutes |

PD-FLAT 360i/8 ROUND BLACK DALI

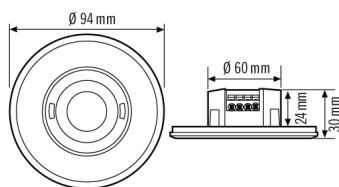
| Item number | GTIN |
|-------------|---------------|
| EP10427916 | 4015120427916 |

| | | | |
|--|---|-----------------------|----------------------|
| Orientation light | 10 - 50 % luminous efficiency | Master/slave function | ✓ |
| Switch-off delay time, orientation light | disabled/approx. 1 minute – 240 minutes | Manual override | yes, via IR |
| Function | Switching | DALI output 1 | DALI bus / Broadcast |
| Bus voltage | 9.5–22.5 V DC | | |

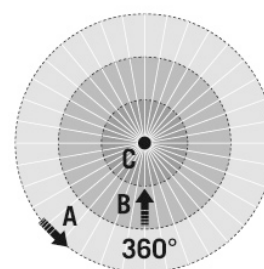
Accessories

| Product designation | Item number | GTIN |
|----------------------------|-------------|---------------|
| ESY-Pen | EP10425356 | 4015120425356 |
| REMOTE CONTROL PDi DALI | EP10425899 | 4015120425899 |
| FLAT COVER ROUND WH | EP00007231 | 4015120007231 |
| FLAT COVER SQUARE BK | EP00007286 | 4015120007286 |
| FLAT COVER GLASS ROUND BK | EP00007293 | 4015120007293 |
| FLAT COVER GLASS SQUARE BK | EP00007309 | 4015120007309 |
| FLAT COVER LARGE ROUND WH | EP10428579 | 4015120428579 |
| FLAT COVER LARGE ROUND BK | EP10428098 | 4015120428098 |
| FLAT MOUNTING SET IP20 FM | EP10426889 | 4015120426889 |
| BASKET GUARD ROUND SMALL | EM10425615 | 4015120425615 |
| BASKET GUARD ROUND LARGE | EM10425608 | 4015120425608 |
| POWER SUPPLY 200mA DALI | EC10430008 | 4015120430008 |
| ACTUATOR FULL AUTO C3 DALI | EP10427473 | 4015120427473 |
| ACTUATOR SEMI AUTO C4 DALI | EP10427480 | 4015120427480 |

Scale drawing



Field of detections



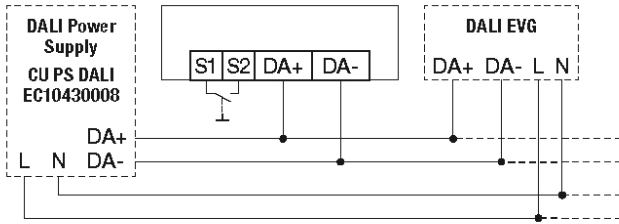
Detection range

| | |
|-------------------|-------|
| Diagonally (A) | ∅ 8 m |
| Frontal (B) | ∅ 6 m |
| Presence area (C) | ∅ 4 m |

PD-FLAT 360i/8 ROUND BLACK DALI

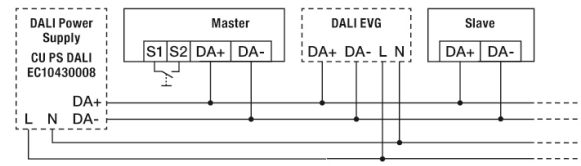
Item number **GTIN**
 EP10427916 4015120427916

Circuit diagram



Standard operation

Circuit diagram



Master/Slave mode