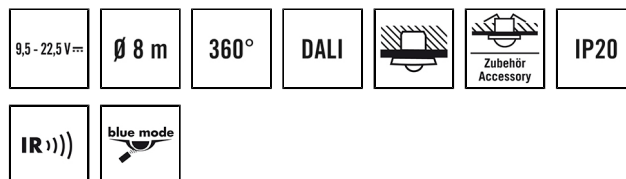


## PD-FLAT 360i/8 ROUND WHITE DALI

**Item number**      **GTIN**  
 EP10427541      4015120427541



### Product description

- DALI design presence detector with excellent sensing capabilities, at least 8 m in diameter.
- Low profile design with plastic design covers: round, white - variably interchangeable (alternatively: square, glass, black)

### Technical data

GENERAL	
Device category	Ceiling-mounted presence detector
Special product features	Simple programming using remote control with "blue mode" technology
User interface	IR remote control, DALI-Bus
Remote controllable	✓
Conformity	CE, RoHS, WEEE
Product-specific information	Separate DALI power supply required
Warranty	5 years

ATTACHMENT	
Installation type	Recessed mounting
Installation position	Ceiling
Installation dimension	Installation depth: 24 mm, Ø 60 mm
Type of connection	Push terminal
Connectable wire cross section	1,50 - 2,50 mm <sup>2</sup>

HOUSING	
Dimensions	Height/Depth 30 mm, Ø 94 mm
Weight	73 g
Material	UV-stabilised polycarbonate
Protection type	IP20
Permissible ambient temperature	0 °C...+50 °C
Relative humidity	5 - 93 %, non-condensing
Colour	white, similar to RAL 9010

ELECTRICAL VERSION	
Protection class	III
Nominal voltage	9,5 - 22,5 V

Power consumption	0,3 W
Power consumption	12 mA

SENSORS	
Detection angle	360°
Detection range diagonally	Ø 8 m
Detection range head-on	Ø 6 m
Detection range presence	Ø 4 m
Field of detection	up to 50 m <sup>2</sup>
Recommended installation height	2,5 m
Max. mounting height	5 m
Light measurement	mixed light

CONTROL	
Number of light channels	1
Number of HLK-channels	2
Push button input lighting	1
Push button input HVAC	–
Slave input	✓
Mode	Semi-automatic, Fully automatic
Konstantlichtregelung	✓
Channel 1	Lighting
Interface	Switching/Dimming
Contact	Bus system
Push button input channel 1	✓
Switch-off delay channel 1	60 s...240 min
Orientation light	10 - 50 % luminous efficiency
Switch-off delay time, orientation light	disabled/approx. 1 minute – 240 minutes
Orientation light	10 - 50 % luminous efficiency

## PD-FLAT 360i/8 ROUND WHITE DALI

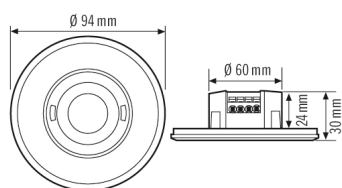
Item number	GTIN
EP10427541	4015120427541

Switch-off delay time, orientation light	disabled/approx. 1 minute – 240 minutes	Master/slave function	✓
Function	Switching	Manual override	yes, via IR
Bus voltage	9.5–22.5 V DC	DALI output 1	DALI bus / Broadcast

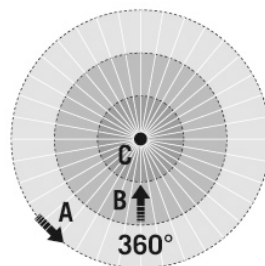
### Accessories

Product designation	Item number	GTIN
ESY-Pen	EP10425356	4015120425356
REMOTE CONTROL PDi DALI	EP10425899	4015120425899
FLAT COVER ROUND WH	EP00007231	4015120007231
FLAT COVER SQUARE WH	EP00007248	4015120007248
FLAT COVER GLASS ROUND WH	EP00007255	4015120007255
FLAT COVER GLASS SQUARE WH	EP00007262	4015120007262
FLAT COVER LARGE ROUND BK	EP10428098	4015120428098
FLAT COVER LARGE ROUND WH	EP10428579	4015120428579
POWER SUPPLY 200mA DALI	EC10430008	4015120430008
BASKET GUARD ROUND SMALL	EM10425615	4015120425615
BASKET GUARD ROUND LARGE	EM10425608	4015120425608
FLAT MOUNTING SET IP20 FM	EP10426889	4015120426889
ACTUATOR FULL AUTO C3 DALI	EP10427473	4015120427473
ACTUATOR SEMI AUTO C4 DALI	EP10427480	4015120427480

### Scale drawing



### Field of detections



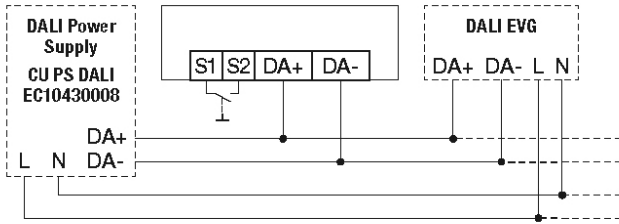
### Detection range

■ Diagonally (A)	Ø 8 m
■ Frontal (B)	Ø 6 m
■ Presence area (C)	Ø 4 m

## PD-FLAT 360i/8 ROUND WHITE DALI

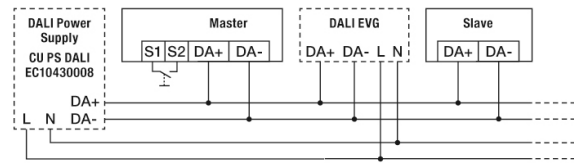
**Item number**      **GTIN**  
EP10427541      4015120427541

**Circuit diagram**



*Standard operation*

**Circuit diagram**



*Master/Slave mode*