

# DATA SHEET

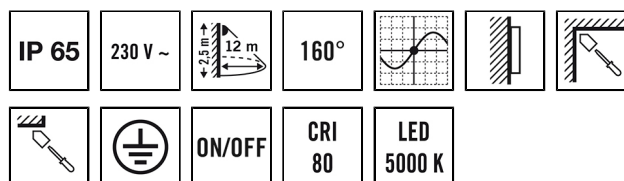
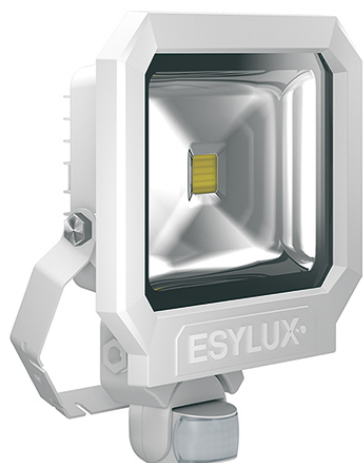
## SUN AFL TR 5600 850 MD WH

### Item number

EL10810275

### GTIN

4015120810275



### Product description

- LED floodlight with high-grade die-cast aluminium housing and integrated motion detector with 160° field of detection for convenient lighting control
- 50 W LED luminous efficiency corresponds to 240 W light bulb, light colour approx. 5000 K white
- High light yield of 125 lm/W, excellent colour rendering index Ra 80

### Technical data

#### GENERAL

Device category	Floodlights
Product information	The floodlights are intended for use outdoors. If used inside (e. g. below the ceiling) the heat cannot be sufficiently discharged where necessary.
User interface	Adjusting controller
Remote controllable	–
Conformity	CE, RoHS, WEEE
Warranty	3-year

#### ATTACHMENT

Installation type	Surface mounting
Installation position	Wall
Type of connection	Screwed terminal
Connectable wire cross section	1,50 - 2,50 mm <sup>2</sup>
Number of contacts	3

#### HOUSING

Dimensions	Length 290 mm x Width 250 mm x Height/Depth 86 mm
Weight	1980 g
Material	Die-cast aluminium and UV-stabilised plastic
Protection type	IP65
Permissible ambient temperature	-25 °C...+40 °C
Impact resistance	IK08
Colour	white, similar to RAL 9016

#### ELECTRICAL VERSION

Protection class	I
Nominal voltage	230 V / 50 Hz
Stand-by consumption	0.5 W
In-rush current	2,6 A / 322 μs
Leakage current	0,232 mA

#### LIGHT

Diffusor	transparent
Light emission	direct
Beam angle	110 °
Flicker factor	<20 %
Rated output	45 W
Luminous Flux (light)	5630 lm
Luminous efficacy	125 lm/W
Colour temperature	5000 K
Colour rendering index Ra	> 80
L70B10 lifetime at 25 °C	40000 h
Life time L70B50 at 25 °C	40000 h
Life time L80B10 at 25 °C	25000 h
Life time L80B50 at 25 °C	25000 h
Life time L90B10 at 25 °C	15000 h
Life time L90B50 at 25 °C	15000 h
Energy efficiency class	A++ to A

#### SENSORS

Detection angle	160°
Detection range diagonally	12 m
Detection range head-on	5 m
Field of detection	201 m <sup>2</sup>

# DATA SHEET

## SUN AFL TR 5600 850 MD WH

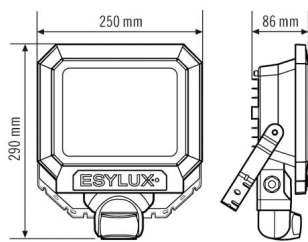
Item number	GTIN
EL10810275	4015120810275

Range adjustment	mechanically with included cut to size lens mask	Recommended installation height	2,5 m
		Max. mounting height	4 m

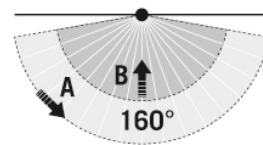
### Accessories

Product designation	Item number	GTIN
FL WALL ARM 700 WH	EL10810527	4015120810527
FL GROUND SPIKE WH	EL10810541	4015120810541

### Scale drawing



### Field of detections



### Detection range

Diagonally (A)	12 m
Frontal (B)	5 m

### Light distribution

