

# DATA SHEET

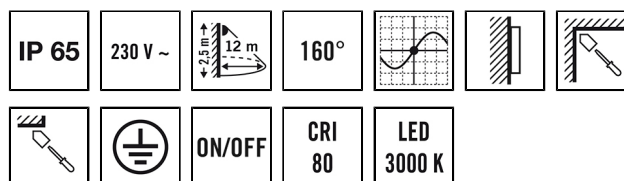
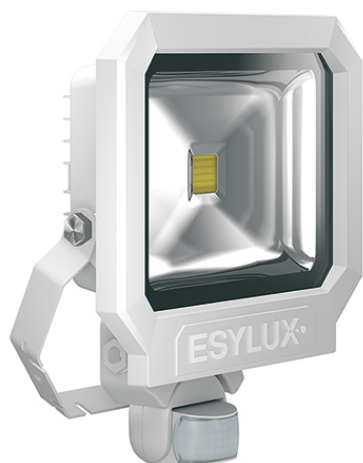
## SUN AFL TR 5400 830 MD WH

### Item number

EL10810220

### GTIN

4015120810220



### Product description

- LED floodlight with high-grade die-cast aluminium housing and integrated motion detector with 160° field of detection for convenient lighting control
- 50 W LED luminous efficiency corresponds to 215 W light bulb, light colour approx. 3000 K white
- High light yield of 120 lm/W, excellent colour rendering index Ra 80

### Technical data

#### GENERAL

|                     |   |
|---------------------|---|
| Device category     | Floodlights   |
| Product information | The floodlights are intended for use outdoors. If used inside (e. g. below the ceiling) the heat cannot be sufficiently discharged where necessary. |
| User interface      | Adjusting controller  |
| Remote controllable | –   |
| Conformity          | CE, RoHS, WEEE  |
| Warranty            | 3-year  |

#### ATTACHMENT

|                                |                             |
|--------------------------------|-----------------------------|
| Installation type              | Surface mounting            |
| Installation position          | Wall                        |
| Type of connection             | Screwed terminal            |
| Connectable wire cross section | 1,50 - 2,50 mm <sup>2</sup> |
| Number of contacts             | 3                           |

#### HOUSING

|                                 |   |
|---------------------------------|---|
| Dimensions                      | Length 290 mm x Width 250 mm x Height/Depth 86 mm |
| Weight                          | 1980 g  |
| Material                        | Die-cast aluminium and UV-stabilised plastic      |
| Protection type                 | IP65  |
| Permissible ambient temperature | -25 °C...+40 °C                                   |
| Impact resistance               | IK08  |
| Colour                          | white, similar to RAL 9016                        |

#### ELECTRICAL VERSION

|                      |                |
|----------------------|----------------|
| Protection class     | I              |
| Nominal voltage      | 230 V / 50 Hz  |
| Stand-by consumption | 0.5 W          |
| In-rush current      | 2,6 A / 322 μs |
| Leakage current      | 0,232 mA       |

#### LIGHT

|                           |             |
|---------------------------|-------------|
| Diffusor                  | transparent |
| Light emission            | direct      |
| Beam angle                | 110 °       |
| Flicker factor            | <20 %       |
| Rated output              | 45 W        |
| Luminous Flux (light)     | 5400 lm     |
| Luminous efficacy         | 120 lm/W    |
| Colour temperature        | 3000 K      |
| Colour rendering index Ra | > 80        |
| L70B10 lifetime at 25 °C  | 40000 h     |
| Life time L70B50 at 25 °C | 40000 h     |
| Life time L80B10 at 25 °C | 25000 h     |
| Life time L80B50 at 25 °C | 25000 h     |
| Life time L90B10 at 25 °C | 15000 h     |
| Life time L90B50 at 25 °C | 15000 h     |
| Energy efficiency class   | A++ to A    |

#### SENSORS

|                            |                    |
|----------------------------|--------------------|
| Detection angle            | 160°               |
| Detection range diagonally | 12 m               |
| Detection range head-on    | 5 m                |
| Field of detection         | 201 m <sup>2</sup> |

# DATA SHEET

## SUN AFL TR 5400 830 MD WH

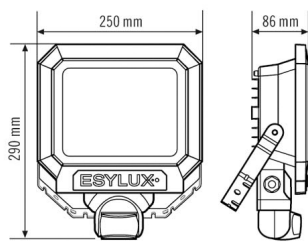
| Item number | GTIN          |
|-------------|---------------|
| EL10810220  | 4015120810220 |

|                  |  |                                 |       |
|------------------|--|---------------------------------|-------|
| Range adjustment | mechanically with included cut to size lens mask | Recommended installation height | 2,5 m |
|                  |  | Max. mounting height            | 4 m   |

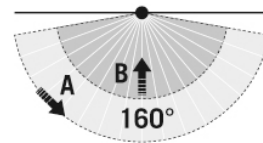
### Accessories

| Product designation | Item number | GTIN          |
|---------------------|-------------|---------------|
| FL WALL ARM 700 WH  | EL10810527  | 4015120810527 |
| FL GROUND SPIKE WH  | EL10810541  | 4015120810541 |

### Scale drawing



### Field of detections



### Detection range

|                |      |
|----------------|------|
| Diagonally (A) | 12 m |
| Frontal (B)    | 5 m  |

### Light distribution

