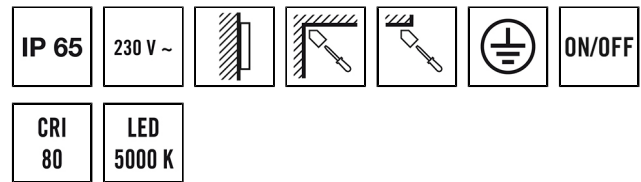
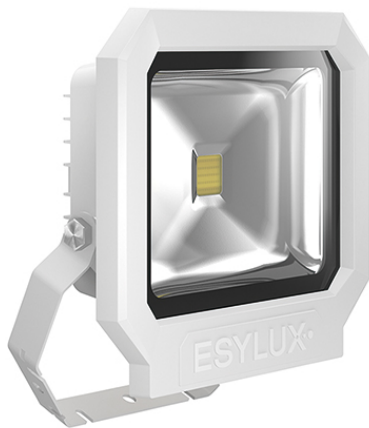


# DATA SHEET

## SUN OFL TR 3700 850 WH

**Item number** EL10810152  
**GTIN** 4015120810152



### Product description

- LED spotlight with high-quality aluminium die-cast housing
- 30 W LED luminous efficiency corresponds to 155 W light bulb, light colour approx. 5000 K white
- High light yield of 130 lm/W, excellent colour rendering index Ra 80

### Technical data

GENERAL	
Device category	Floodlights
Product information	The floodlights are intended for use outdoors. If used inside (e. g. below the ceiling) the heat cannot be sufficiently discharged where necessary.
Remote controllable	–
Conformity	CE, RoHS, WEEE
Warranty	3-year
ATTACHMENT	
Installation type	Surface mounting
Installation position	Wall
Type of connection	Screw terminal
Connectable wire cross section	1,50 - 2,50 mm <sup>2</sup>
Number of contacts	3
HOUSING	
Dimensions	Length 267 mm x Width 252 mm x Height/Depth 86 mm
Weight	1680 g
Material	Die-cast aluminium and UV-stabilised plastic
Protection type	IP65
Permissible ambient temperature	-25 °C...+50 °C
Impact resistance	IK08

Colour	white, similar to RAL 9016
ELECTRICAL VERSION	
Protection class	I
Nominal voltage	230 V / 50 Hz
In-rush current	11,4 A / 98 µs
Leakage current	0,022 mA
LIGHT	
Diffusor	transparent
Light emission	direct
Beam angle	110 °
Flicker factor	<20 %
Rated output	28 W
Luminous Flux (light)	3650 lm
Luminous efficacy	130 lm/W
Colour temperature	5000 K
Colour rendering index Ra	> 80
L70B10 lifetime at 25 °C	45000 h
Life time L70B50 at 25 °C	45000 h
Life time L80B10 at 25 °C	30000 h
Life time L80B50 at 25 °C	30000 h
Life time L90B10 at 25 °C	15000 h
Life time L90B50 at 25 °C	15000 h
Energy efficiency class	A++ to A

# DATA SHEET

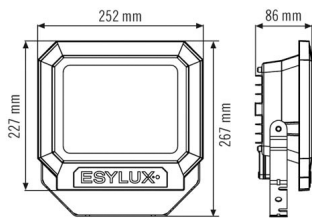
## SUN OFL TR 3700 850 WH

**Item number**      **GTIN**  
EL10810152      4015120810152

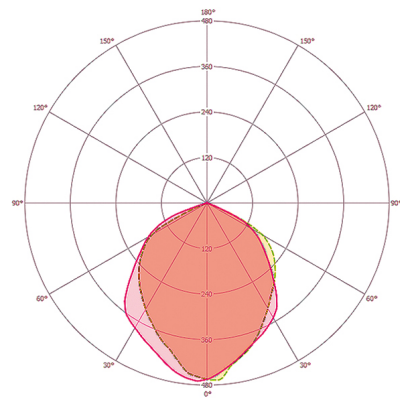
### Accessories

Product designation	Item number	GTIN
FL WALL ARM 700 WH	EL10810527	4015120810527
FL GROUND SPIKE WH	EL10810541	4015120810541

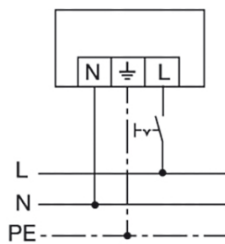
### Scale drawing



### Light distribution



### Circuit diagram



Standard operation with on/off switch