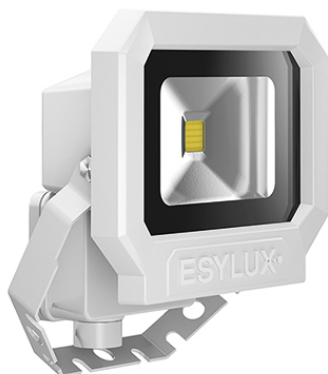


DATA SHEET

SUN OFL TR 1000 850 WH

Item number EL10810053
GTIN 4015120810053



IP 65	230 V ~					ON/OFF
CRI 80	LED 5000 K					

Product description

- LED spotlight with high-quality aluminium die-cast housing
- 10 W LED luminous efficiency corresponds to 63 W light bulb, light colour approx. 5000 K white
- High light yield of 113 lm/W, excellent colour rendering index Ra 80

Technical data

GENERAL	
Device category	Floodlights
Product information	The floodlights are intended for use outdoors. If used inside (e. g. below the ceiling) the heat cannot be sufficiently discharged where necessary.
Remote controllable	–
Conformity	CE, RoHS, WEEE
Warranty	3-year
ATTACHMENT	
Installation type	Surface mounting
Installation position	Wall
Type of connection	Screw terminal
Connectable wire cross section	1,50 - 2,50 mm ²
Number of contacts	3
HOUSING	
Dimensions	Length 150 mm x Width 133 mm x Height/Depth 75 mm
Weight	480 g
Material	Die-cast aluminium and UV-stabilised plastic
Protection type	IP65
Permissible ambient temperature	-25 °C...+50 °C
Impact resistance	IK08

Colour	white, similar to RAL 9016
ELECTRICAL VERSION	
Protection class	I
Nominal voltage	230 V / 50 Hz
In-rush current	4,7 A / 117 µs
Leakage current	0,019 mA
LIGHT	
Diffusor	transparent
Light emission	direct
Beam angle	95 °
Flicker factor	<20 %
Rated output	9 W
Luminous Flux (light)	1020 lm
Luminous efficacy	113 lm/W
Colour temperature	5000 K
Colour rendering index Ra	> 80
L70B10 lifetime at 25°C	45000 h
Life time L70B50 at 25 °C	45000 h
Life time L80B10 at 25 °C	30000 h
Life time L80B50 at 25 °C	30000 h
Life time L90B10 at 25 °C	15000 h
Life time L90B50 at 25 °C	15000 h
Energy efficiency class	A++ to A

DATA SHEET

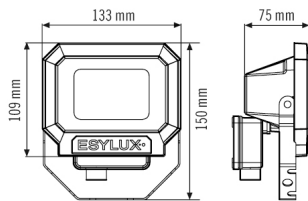
SUN OFL TR 1000 850 WH

Item number **GTIN**
EL10810053 4015120810053

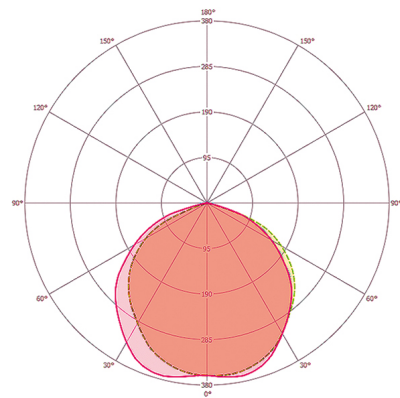
Accessories

Product designation	Item number	GTIN
FL WALL ARM 700 WH	EL10810527	4015120810527
FL GROUND SPIKE WH	EL10810541	4015120810541

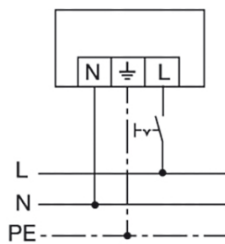
Scale drawing



Light distribution



Circuit diagram



Standard operation with on/off switch