



SERVER AND NETWORK RACKS 42U & 46U FLATPACK



SERVER AND NETWORK RACKS 42U & 46U

Flatpack

The 42U & 46U server and network racks are widely applicable and modular in structure. They are delivered in the color RAL 9011 (black). The rack is equipped with 2 cable trays which are mounted left and right at the back of the rack. Vertical toolless mount PDUs can be placed to these cable trays. The cable trays are equipped with elongated holes for Velcro mounting and mounting positions for plastic cable rings (446057). Cage nuts can be used for mounting other accessories.

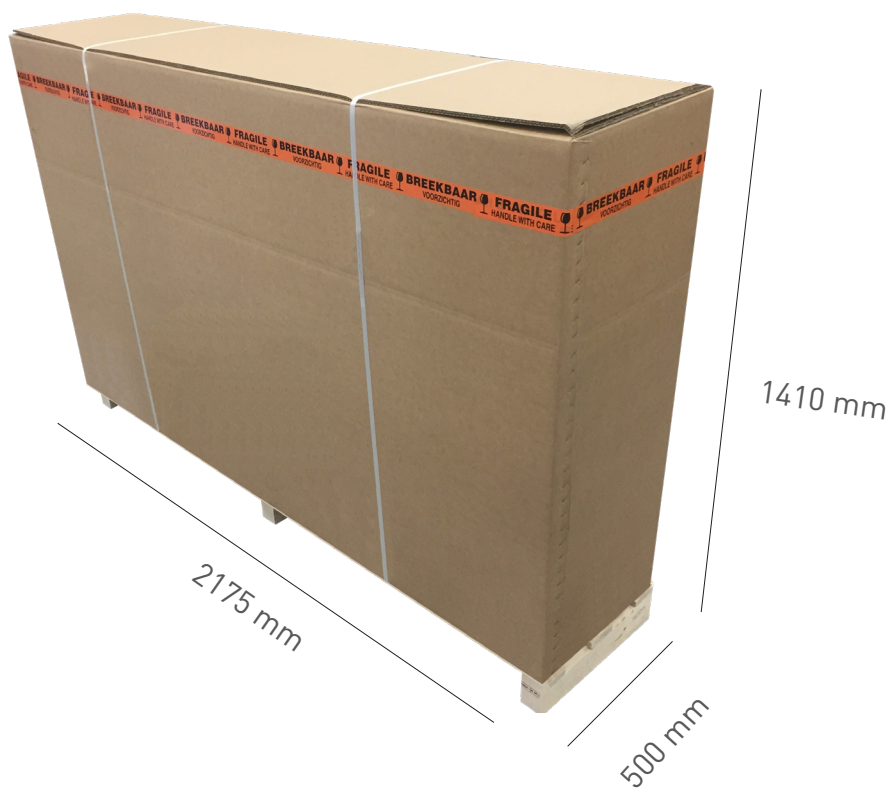
SPECIFICATIONS

- **Door front:** 80% perforated
- **Door back:** 80% perforated double back door
- **Load capacity (static):** 1500 kg
- **Security:** Fix Easy 2-point swivel handle with EK-333 cylinder lock
- **19-inch profiles:** 4 pcs
- **Accessories:** PDU cable tray (2x), compatible with velcro straps, cable rings (446057) and cage nuts
- **Delivered separately:** M6 20 cage nuts / M6 20 screws with finishing washer



RAL 9011

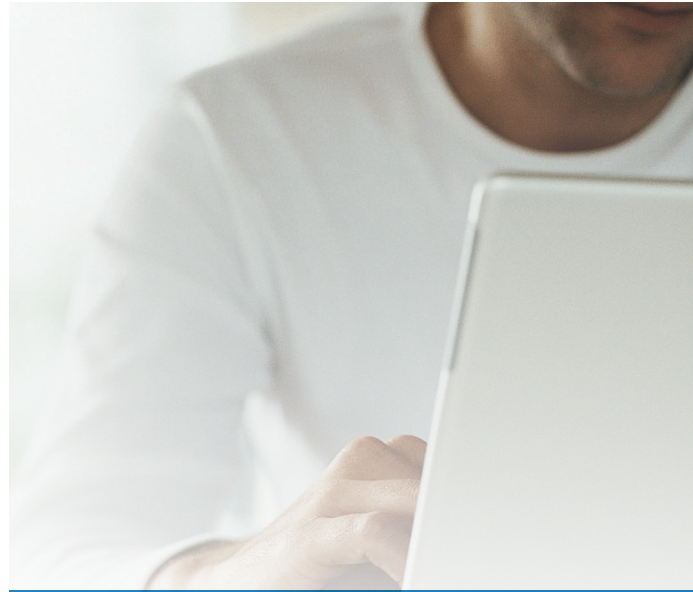
Specifications stand-alone rack	4 460 30	4 460 31	4 460 32	4 460 33	4 460 34	4 460 35
Height in U	42	42	42	42	42	42
Height in mm	2000	2000	2000	2000	2000	2000
Width in mm	600	600	600	800	800	800
Depth in mm	1000	1100	1200	1000	1100	1200
Roof layout	3 cut-outs with 2 cover plates left/right and 1 cable entry brush at the back	3 cut-outs with 2 cover plates left/right and 1 cable entry brush at the back	3 cut-outs with 2 cover plates left/right and 1 cable entry brush at the back	4 cut-outs with 3 cover plates left/middle/right and 1 cable entry brush at the back	4 cut-outs with 3 cover plates left/middle/right and 1 cable entry brush at the back	4 cut-outs with 3 cover plates left/middle/right and 1 cable entry brush at the back
Weight of the package in kg	120	120	120	130	130	130



BENEFITS OF FLATPACK

- Where pre-assembled racks can not be mounted due to logistical limitations, flatpack is the ideal solution!
- Due to slim packaging (500 mm) 2 racks in 1 load meter
- Easy transportation
- Fast assembly

4 460 36	4 460 37	4 460 38	4 460 39	4 460 40	4 460 41
46	46	46	46	46	46
2200	2200	2200	2200	2200	2200
600	600	600	800	800	800
1000	1100	1200	1000	1100	1200
3 cut-outs with 2 cover plates left/right and 1 cable entry brush at the back	3 cut-outs with 2 cover plates left/right and 1 cable entry brush at the back	3 cut-outs with 2 cover plates left/right and 1 cable entry brush at the back	4 cut-outs with 3 cover plates left/middle/right and 1 cable entry brush at the back	4 cut-outs with 3 cover plates left/middle/right and 1 cable entry brush at the back	4 cut-outs with 3 cover plates left/middle/right and 1 cable entry brush at the back
140	140	140	150	150	150



FOLLOW US TOO ON

 Datacenter.legrand.com

 Youtube.com/c/minkelshq

Youtube.com/raritaninc

 Linkedin.com/company/legrand-data-center

Linkedin.com/company/minkels

Linkedin.com/company/raritan