

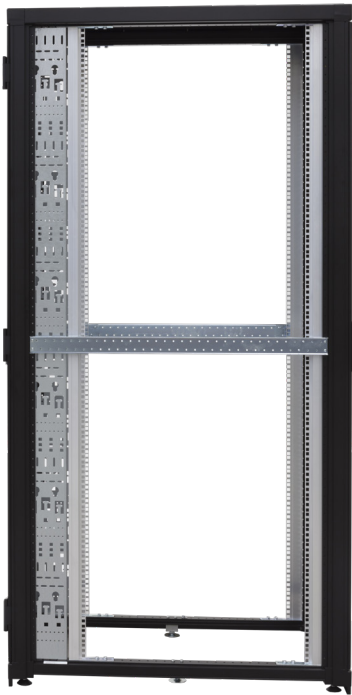


LCS³ 19" SERVER CABINETS



LCS³

19" server cabinets



Legrand offers a wide range of server and network cabinets, with flexibility, sustainability and service as the keywords. The server and network cabinets are widely applicable and modular in structure.

SPECIFICATIONS

- **Colour:** RAL 9011 (black)
- **Frame:** Aluminium, demountable
- **Load capacity:** 1500 kg (static)
- **Front door:** 80% perforated front door.
Door is fitted with a Fix-easy swivel handle with an EK-333 cylinder lock
- **Rear door:** 80% perforated double rear doors.
Door is fitted with a Fix-easy swivel handle with an EK-333 cylinder lock
- **Roof:** 3 or 4 cut outs with 2 or 3 blind plates and 1 cable entry brush, depending on the frame size
- **Interior:** The cabinet is equipped with 4 x 19"-profiles including height (U) indication
The distance to the cabinet front is set to 80 mm, the pitch to 740 mm
- **Cable management:** The cabinet is equipped with two cable trays for cable management. Special features include toolless mount key holes for mounting vertical PDU's and fixation points to mount plastic cable rings (4 460 57)
- **Accessories:** The cabinets are supplied with 20 cage nuts and screws
- **Server cabinets are delivered excluding side panels**



RAL 9011



CABINET	Height in mm	Height in U	Width in mm	Depth in mm
4 460 00	2000	42	600	1000
4 460 01	2000	42	600	1100
4 460 02	2000	42	600	1200
4 460 03	2000	42	800	1000
4 460 04	2000	42	800	1100
4 460 05	2000	42	800	1200
4 460 06	2200	46	600	1000
4 460 07	2200	46	600	1100
4 460 08	2200	46	600	1200
4 460 09	2200	46	800	1000
4 460 10	2200	46	800	1100
4 460 11	2200	46	800	1200

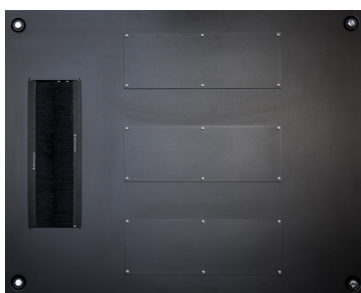
Roof layout and inserts

600mm



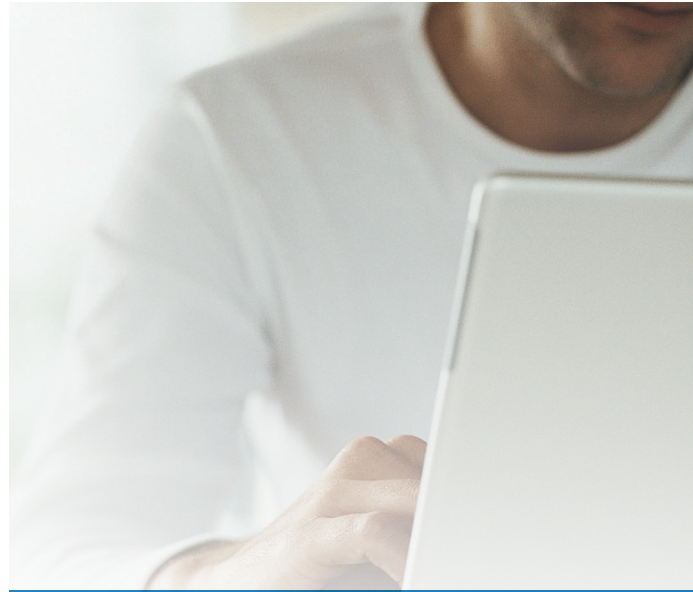


Dimensions:		Height	U	42 or 46
		Height	mm	2000 or 2200
		Width	mm	600 or 800
		Depth	mm	1000, 1100 or 1200
General Specifications:		Colour		RAL9011
		Material		Frame, aluminium extrusions
		Static Load Capacity	kg	1500
		Suitability		End-of-row side panel ready Legrand aisle containment
		IP grade		IP20
		Earthing		Doors, side panels, central earthing point
Interior:		19-inch profiles	pcs	4
		Material		Aluminium
		Adjustability (depth)		Stepless adjustability
		Adjustability (width)		Adjustable to 21-inch
		U marking		1st U at bottom
		Position, Front Profiles		Position from front 80mm
		Position, Rear Profiles		Intermediate distance 740mm
		Energy Efficiency		No Airflow Package included
Front/Rear closure:		Front door		Perforated metal door
		Rear door		Double perforated metal door
		Perforation		80%, (front & rear door)
		Security		2-Points Fix-Easy swivel handle with an EK-333 cylinder lock
		Material		Steel door
		Finishing		Powder coated
		Hinges		3 hinges, easily reversable, 180 degree opening
Roof:		Layout and inserts		3 or 4 cut outs with 2 or 3 blind plates and 1 cable entry brush Depending on the frame size
Accessories pre-mounted:		Cable Tray (width)	mm	125mm (2x)
		Position		Rear of the cabinet, left and right
Approvals:		Standards Compliancy		IEC-60297-3-109; IEC-60297-3-100 IEC-60917-2-5 IEC-61587-1; Environmental: C1, A1; Static load LT1, ST1, NL5; Dynamic load DL4V, DL4S, IK04



800mm

OPTIONAL: SIDE PANEL	Height in U	Depth in mm
4 460 24	42	1000
4 460 25	42	1100
4 460 26	42	1200
4 460 27	46	1000
4 460 28	46	1100
4 460 29	46	1200



FOLLOW US TOO ON

 Datacenter.legrand.com

 Youtube.com/c/minkelshq

Youtube.com/raritaninc

 Linkedin.com/company/legrand-data-center

Linkedin.com/company/minkels

Linkedin.com/company/raritan