



Open Web Net/Zigbee Gateway

0883 28 3578

Description

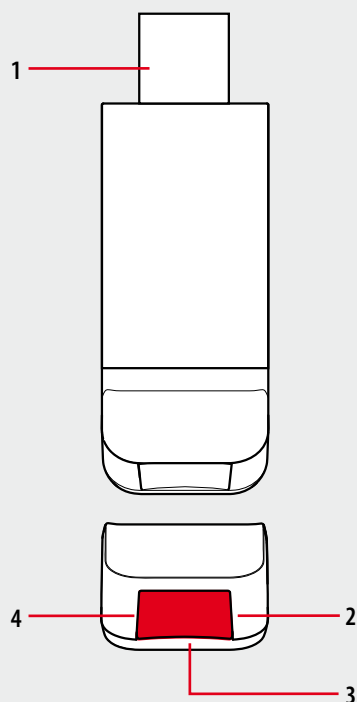
Interface for interaction with the functions of the ZigBee radio system using a Personal Computer and an Open Web Net communication protocol.

The device must be connected to a USB port of the computer and features a radio transmitter for sending/receiving data to and from ZigBee devices installed in the electric system.

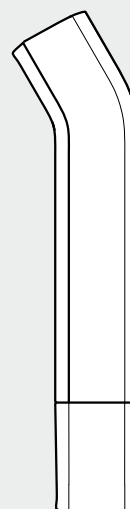
Technical data

Power supply:	From USB 2.0 socket
Operating temperature:	5 – 45 °C
Technology:	Radio 2.4 GHz standard ZigBee®
Capacity:	150 m free field, 15 m in rooms with concrete walls

Front view



Side view



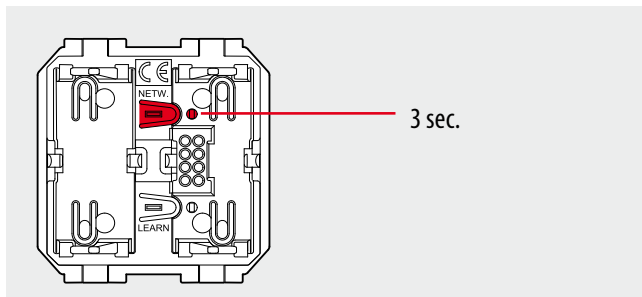
Legend

1. USB connector
2. Data traffic indicator LED
3. NETWORK key
4. NETWORK LED

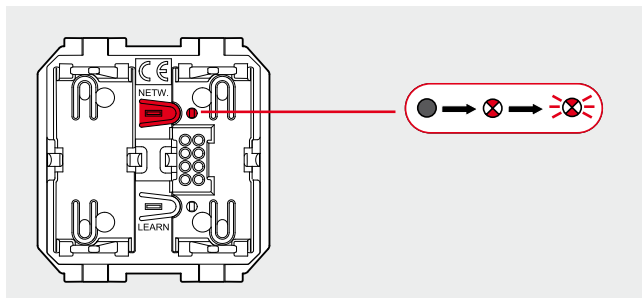
Configuration

Connecting the device to the network

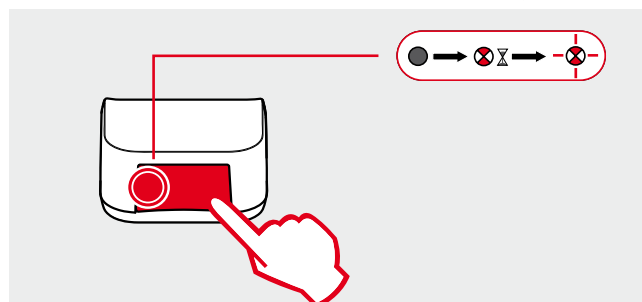
1. In the system identify the actuator device with "ZigBee network coordinator" function, and press the NETWORK key for 3 seconds.



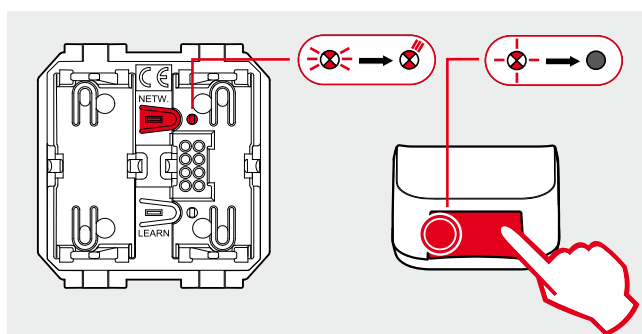
2. The NETWORK LED (yellow) will come on steady, and after a few instants will start flashing quickly.



3. Press the NETWORK key on the interface. The NETWORK LED will come on steady during the network search procedure and then will start flashing slowly.

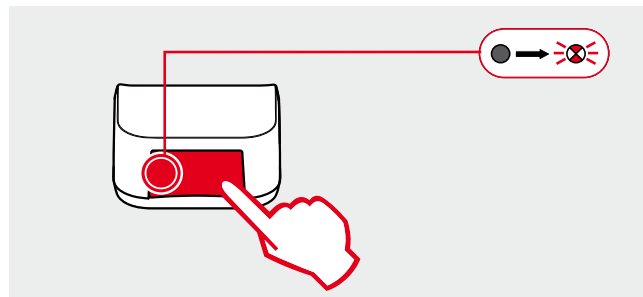


4. To complete the procedure press the NETWORK KEY of the Coordinator device; the corresponding NETWORK LED will flash three times while the interface NETWORK LED will turn off.



Disconnecting the interface from the network

1. Press the NETWORK key on the interface. The NETWORK LED will flash quickly.



2. Press the NETWORK key again for at least 10 seconds. The NETWORK LED will flash quickly twice and then will turn off. The interface is no longer connected to the ZigBee network.

