

• Automatic Switch

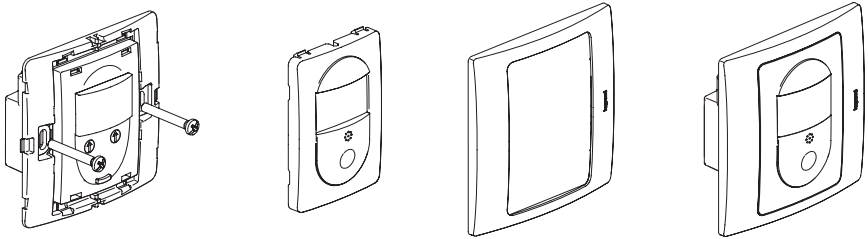


Utilization

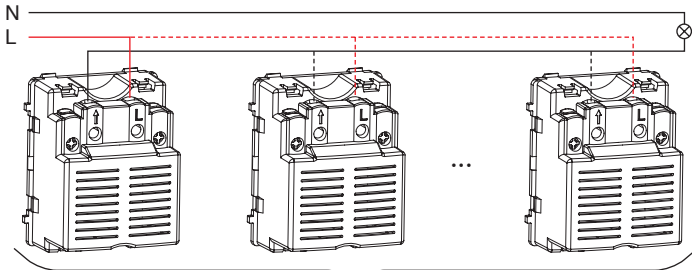
 25°C 230V 50Hz/60Hz	① 	② 	③ ø26 ø38	④ 	⑤ 	⑥ 	⑦ 	⑧ 	⑨
Maxi	200W	200W	— NO —	— NO —	— NO —	— NO —	— NO —	— NO —	— NO —
Mini	25W	25W							

1. Incandescent lamps
2. 230V tungsten halogen lamps
3. ø26 or 38 mm Fluorescent lamps (forbidden)
4. Tungsten halogen lamps with ferromagnetic transformer (forbidden)
5. Tungsten halogen lamps with electronic transformer (forbidden)
6. Ferromagnetic transformers (forbidden)
7. Electronic transformers (forbidden)
8. Motors (forbidden)
9. Additional radiators (forbidden)

Important: If the wiring diagrams are not strictly followed, or if the values shown in the table are exceeded (voltage, power, temperature, frequency), or if the power is too low and causes the light to blink, the switch would be severely damaged.

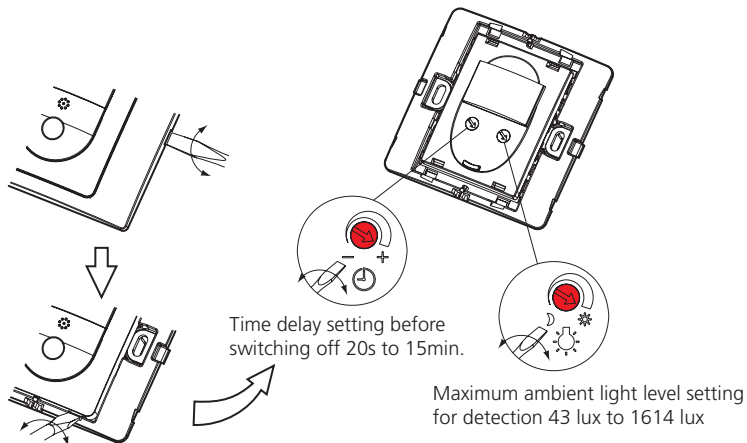


Wiring

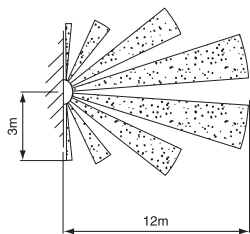


8 Max. Note that the minimum load will increase by 25W per additional automatic switch. The maximum load remains unchanged.

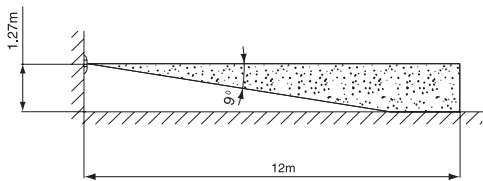
Setting



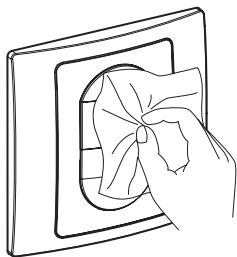
Infrared Detection



Speed of body for detection: from 0.3 m/s to 7 m/s
Normal range along the center (body motion): 12m/40 feet
Normal range on the edge (body motion): 3m/10 feet
Horizontal detection angle: 180°



Maintenance



- Keep the lens clean using a dry soft cloth.
(Do not use chemical cleanser)