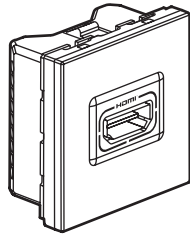
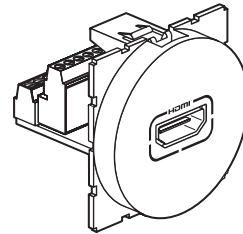


Arteor™ HDMI socket

Cat. No(s): 5 722 81/85 - 5 727 81/85



5 722 81/5 727 81



5 722 85/5 727 85

1. USE

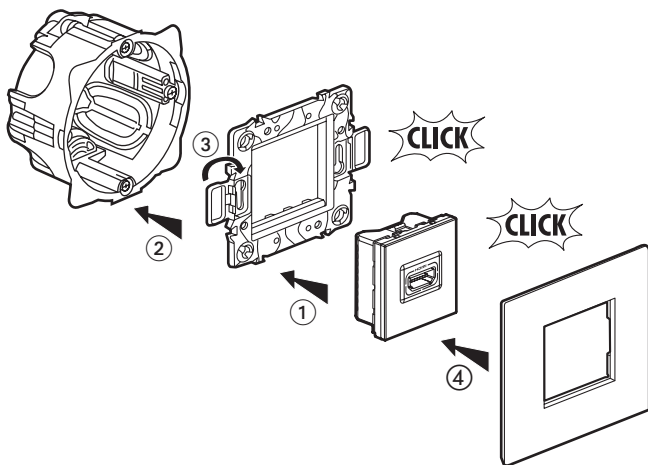
The HDMI is an audio-video socket for connecting terminals such as plasma or LCD televisions and home cinema systems. DVD writers, satellite demodulators, etc.
The connection is in high-fidelity digital format. The link between the two items of equipment must not be longer than 5 m to ensure high quality. Beyond that an amplification system must be included in the installation. Type A connectors comply with standard HDMI 1.3.

2. RANGE

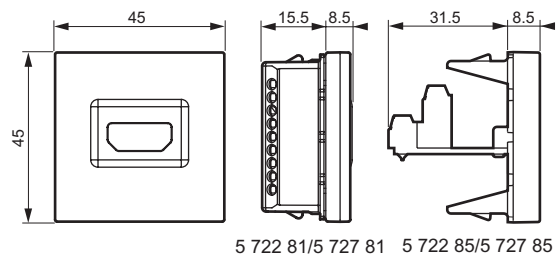
	Designation	Finishes		Number of modules	Connection method	Weight (g)
		White	Magnesium			
	HDMI socket square	5 722 81	5 727 81	2	with screws	35
	HDMI socket round	5 722 85	5 727 85	2	with screws	33

3. PREPARATION

The mechanisms can be flush-mounted.



4. OVERALL DIMENSIONS



5 722 81/5 727 81 5 722 85/5 727 85

5. CONNECTION

Wide terminal bank compatible with max. 1 mm² conductor.

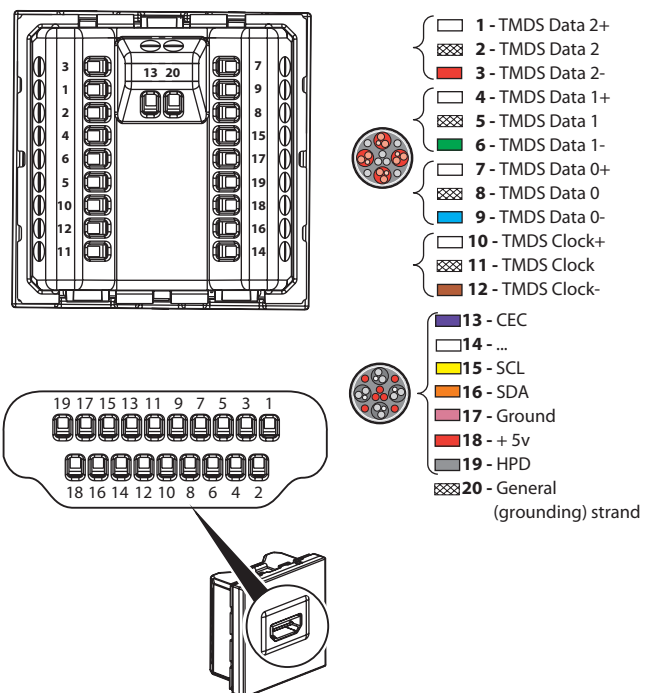
Supplied in a bag containing:

- 1 colring cable tie
- Crimp terminals for < 0.5 mm² conductors
- Thermoformable sheaths.

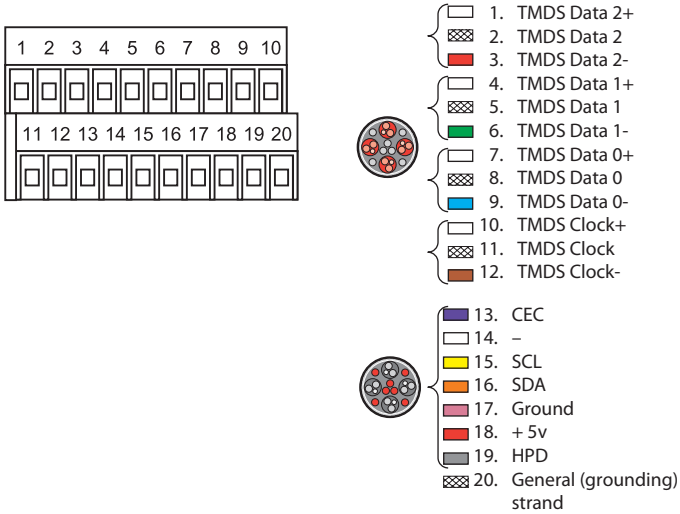
Cable bend radius: 35 mm.

Max. cable length: 5 m (beyond that an HDMI amplifier is recommended).

For 5 722 81/5 727 81



and for 5 722 85/5 727 85



5. CONNECTION *(continued)*

Wiring:

Required tools: flathead screwdriver 0.4 x 2.5 mm and flat-nose pliers. Isolate the braids and the drain wire with the neoprene sleeves supplied, thread them through the crimp terminals supplied and crimp with the flat-nose pliers.

Fold the cable cores in two to improve mechanical resistance, thread them through the crimp terminals supplied and crimp with the flat-nose pliers.

Start by wiring the braids and the drain wire then the coaxial cores.

End with the single conductors.

Hold the cable in place mechanically by using the cable tie supplied.

6. TECHNICAL CHARACTERISTICS

6.1 Mechanical characteristics

Impact tests: IK 04

Penetration of solids/liquids: IP 40

6.2 Materials characteristics

Centre plate: ABS

Self-extinguishing: 650° C / 30 s

6.3 Climatic characteristics

Storage temperature: - 10° C to + 70° C

Operating temperature: - 5° C to + 50° C

7. CLEANING

Surface cleaning with a cloth.

Do not use: acetone, tar remover, trichloroethylene.

Resistance to the following cleaning agents: Hexane (EN 60669-1), Methylated spirits, Soapy water, Diluted ammonia, Diluted pure bleach 10 %, Glass cleaning substance, Pre-impregnated wipes.

Caution: A preliminary test should be carried out if other specific cleaning products are to be used.