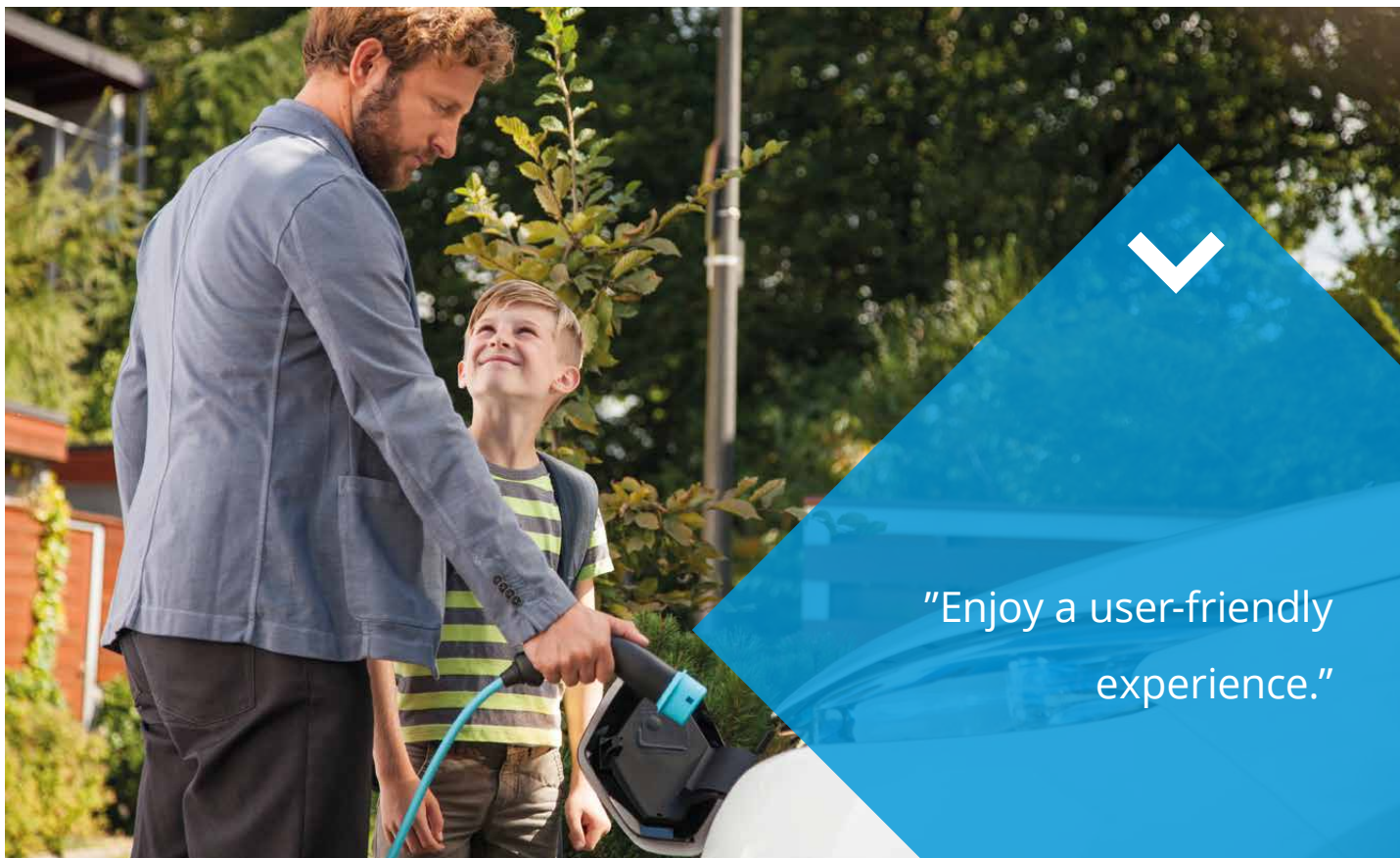


Ensto Pro

EV charging with maximum durability.

The intelligent and durable Ensto Pro is a future-proof solution designed to deliver reliable EV charging for any business, in any environment.



"Enjoy a user-friendly experience."



Your business, your pleasure

Ensto Pro will serve your business needs everywhere



“Perfect for retailers, fleets, car parks, and more.”

Ensto Pro is THE charger. It includes charging and service ability for public and semi-public environment with connectivity to serve users, owners and operators!

It's smart

OCPP 1.6 and dynamic load management are basic features of Ensto Pro. With these Ensto Pro qualifies as smartest EV charger on market.

It's tough

The full metal structure of Ensto Pro guarantees durability for both the weather (IP54) and external impacts (IK10).

It's flexible

Agile factory commissioning to back-end systems and wide range of customer tailorings will make Ensto Pro the most suitable selection to customers.

It's safe

Ensto Pro built-in residual circuit breaker (RCD-A + DC 6mA RCMB). This guarantees user safety and installation according standards. This also allows installation without extra components in switchboard.





Black

Structure

- › Body stainless steel, RAL 9016
- › IP54
- › IK10
- › Ambient temperature range -30...+50 °C

Installation

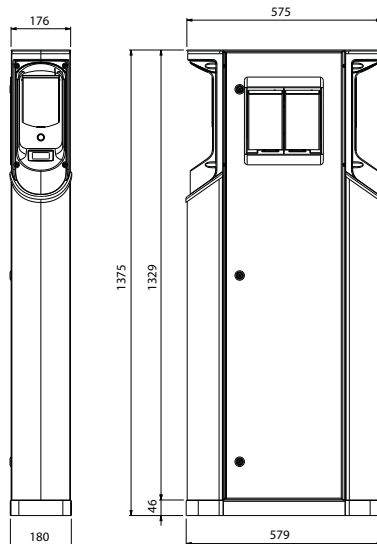
- › Fixing to ground or wall with optional brackets
- › Connection 5x2,5-50 mm² (copper), 6-50 mm² (aluminum)

Features

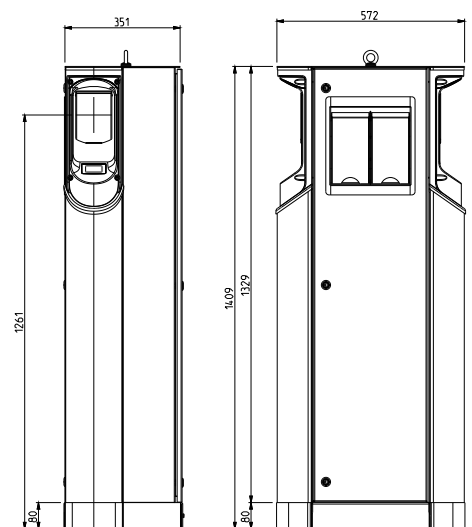
- › Built-in Residual Current breaker (RCD-A + DC 6mA RCMB)
- › Dynamic load management
- › RFID user authentication
- › OCPP 1.6
- › Adjustable maximum current setting, max 32A

Made to order

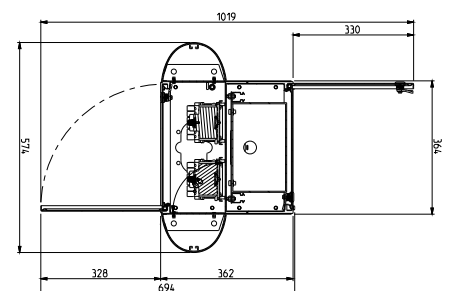
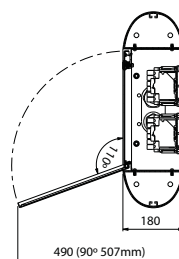
- › Alternative domestic socket
- › Surge protection
- › Distribution cabinet extension
- › Customer branding with paint and/or stickers
- › Factory pre-commissioning to back-end system
- › Arctic Kit - for extreme cold conditions, -30 degrees or below



EVF100, EVF200



EVF300



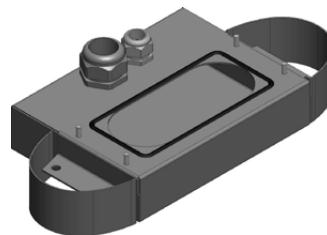
E number	Product code	Technical name	Data connection	Auto & Remote RCD	MID-metering	Mode 3 lock release	IEC15118 communication
1 Socket chargers							
	EVF100W-AS	EVF100W-AS 22kW IP54 Type2 Ethernet	Ethernet				
	EVF100W-ASA	EVF100W-ASA 22kW IP54 Type2 Mobile	Mobile				
	EVF100W-ASB	EVF100W-ASB 22kW IP54 Type2 Ethernet 15118	Ethernet				X
	EVF100W-ASAB	EVF100W-ASAB 22kW IP54 Type2 Mobile 15118	Mobile				X
	EVF100W-BS	EVF100W-BS 22kW IP54 Type2 Ethernet	Ethernet	X		X	
	EVF100W-BSA	EVF100W-BSA 22kW IP54 Type2 Mobile	Mobile	X		X	
	EVF100W-BSB	EVF100W-BSB 22kW IP54 Type2 Ethernet 15118	Ethernet	X		X	X
	EVF100W-BSAB	EVF100W-BSAB 22kW IP54 Type2 Mobile 15118	Mobile	X		X	X
	EVF100W-ASC	EVF100W-AS 22kW IP54 Type2 Ethernet MID	Ethernet		X		
	EVF100W-BSC	EVF100W-BS 22kW IP54 Type2 Ethernet MID	Ethernet	X	X	X	
	EVF100W-BSAC	EVF100W-BSA 22kW IP54 Type2 Mobile MID	Mobile	X	X	X	
	EVF100W-BSBC	EVF100W-BSB 22kW IP54 Type2 Ethernet MID 15118	Ethernet	X	X	X	X
	EVF100W-BSABC	EVF100W-BSAB 22kW IP54 Type2 Mobile MID 15118	Mobile	X	X	X	X
2 Socket chargers							
	EVF200W-AS	EVF200W-AS 2x22kW IP54 Type2 Ethernet	Ethernet				
	EVF200W-ASA	EVF200W-ASA 2x22kW IP54 Type2 Mobile	Mobile				
	EVF200W-ASB	EVF200W-ASB 2x22kW IP54 Type2 Ethernet 15118	Ethernet				X
	EVF200W-ASAB	EVF200W-ASAB 2x22kW IP54 Type2 Mobile 15118	Mobile				X
34 418 08	EVF200W-BS	EVF200W-BS 2x22kW IP54 Type2 Ethernet	Ethernet	X		X	
34 418 09	EVF200W-BSA	EVF200W-BSA 2x22kW IP54 Type2 Mobile	Mobile	X		X	
	EVF200W-BSB	EVF200W-BSB 2x22kW IP54 Type2 Ethernet 15118	Ethernet	X		X	X
	EVF200W-BSAB	EVF200W-BSAB 2x22kW IP54 Type2 Mobile 15118	Mobile	X		X	X
	EVF200W-ASC	EVF200W-AS 2x22kW IP54 Type2 Ethernet MID	Ethernet		X		
34 418 10	EVF200W-BSC	EVF200W-BS 2x22kW IP54 Type2 Ethernet MID	Ethernet	X	X	X	
	EVF200W-BSAC	EVF200W-BSA 2x22kW IP54 Type2 Mobile MID	Mobile	X	X	X	
	EVF200W-BSBC	EVF200W-BSB 2x22kW IP54 Type2 Ethernet MID 15118	Ethernet	X	X	X	X
	EVF200W-BSABC	EVF200W-BSAB 2x22kW IP54 Type2 Mobile MID 15118	Mobile	X	X	X	X
2 Socket chargers with EV Manager subription							
34 418 04	EVF200C	EVF200C 2x22kW IP54 Type2 Ethernet EV Manager	Ethernet	X		X	
34 418 05	EVF200C-A	EVF200C-A 2x22kW IP54 Type2 3G EV Manager	Mobile	X		X	
34 418 07	EVF200C-C	EVF200C-C 2x22kW IP54 Type2 MID Ethernet	Ethernet	X	X	X	
34 418 06	EVF200C-AC	EVF200C-AC 2x22kW IP54 Type2 MID 3G EV Manager	Mobile	X	X	X	
Accessories							
34 403 51	EVTL28.00	EVF ground mounting box					
34 403 52	EVTL31.00	EVF wall mounting bracket					
34 403 53	EVTL32.00	EVF ground mounting box					
34 403 54	EVTL34.00	EVF ground mounting box, cabling from top					
	EVTL36.00	EVF base adapter for EVB32.00					



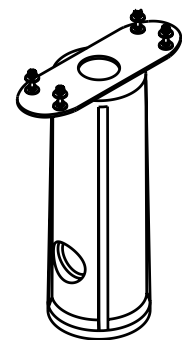
EVTL28.00



EVTL32.00



EVTL34.00



EVTL36.00



Reaching out to your EV driving customers or raising your brand awareness, Ensto Pro is your choice! Wide range of physical and virtual variations, will serve your business in best way possible.

Ensto enables smart EV charging for everyone!



Ensto eFiller

Compact wall mounted charging point with fixed charging cable.



Ensto Wallbox

Modular solution for single or dual EV charging. Compact and user-friendly design.



Ensto Pro

An easy-to-use, long lifetime AC charging station for public and semi-public EV charging.



Ensto Premium

Timelessly stylish and advanced solution for fast charging of electric vehicles.



Ensto Media

Uniquely combines EV charging and outdoor advertisement with its stunning digital display.



Ensto Power

Extremely fast on route charger when you are in a hurry.

- 1-PHASE
- 3-PHASE
- KW / OUTLET
- SMART
- ETHERNET
- SIM
- FIXED CABLE
- CABLE RELEASE
- NEEDED RCD
- CHARGING OUTLETS
- USER CONTROL
- LOAD MANAGEMENT
- MID-METER

	Ensto eFiller	Ensto Wallbox	Ensto Pro	Ensto Premium	Ensto Media	Ensto Power
1-PHASE	x	x	x	x	x	-
3-PHASE	x	x	x	x	x	x
KW / OUTLET	3,6 / 11	22+22 (dual outlet models)	22+22 (dual outlet models)	22	22	50
SMART	-	x	x	x	x	x
ETHERNET	-	x	x	x	x	x
SIM	-	x	x	x	x	x
FIXED CABLE	x	-	-	-	-	x
CABLE RELEASE	-	x	x	x	x	x
NEEDED RCD	B	A	built-in	built-in	built-in	built-in
CHARGING OUTLETS	1	1-2	1-2	1-2	2	4
USER CONTROL	-	x*	x*	x*	x*	x*
LOAD MANAGEMENT	-	x**	x**	x**	x**	x**
MID-METER	-	x***	x	x	x	-

* EV manager with separate subscription
 ** For ethernet versions
 *** With external control box